

A Publication for Contributors

# true blue

Spring 2005 Vol. 5, No. 1

Chi Phi's  
*Star is Rising*  
in the Lone Star state

# Exciting Times!

It is certainly an exciting time to be a Chi Phi. The 2004-2005 academic year has seen a number of accomplishments. Whether it is through the growing of our national staff, through our efforts to grow the Fraternity, or through our new and fresh regional and national events, this will surely be one of Chi Phi's greatest years.



The national staff recently welcomed Brian Tenclinger as the Director of Undergraduate Services. Tenclinger, a member of Sigma Phi Epsilon Fraternity and formerly the Assistant Director of Student Life at Texas A&M University, began his tenure with Chi Phi Fraternity on October 4th, 2004. The national office also hired the services of Kim Godwin as an outside Communications Consultant. Godwin, a member of Delta Zeta Sorority and formerly the Director of Greek Life at Middle Tennessee State University, began on January 4, 2005.

On the expansion front, Chi Phi has rededicated itself to the recolonization of dormant Chapters. Recent efforts have been successful at returning Chi Phi to Georgia Tech, Bucknell, Nebraska and Boston University. Future recolonizations will be forthcoming at both University of Florida and Virginia Tech. We continue to work hard to establish Chi Phi as a major player in the Greek community.

This year, Chi Phi has embarked on a new leadership program designed to take undergraduates from a classroom that will test their skills, stamina, and

focus on the values of the Fraternity. Modeled after a similar program used by Beta Theta Pi Fraternity, we are pleased to launch the 2005 Chi Phi Wilderness Academy. The Chi Phi Wilderness Academy is an outdoor leadership experience that takes undergraduates through a bold agenda that focuses on the core values of the Fraternity and on a series of challenging outdoor elements designed to promote personal leadership and development.

Also, we hope that you will join us for the 140th Congress in San Antonio, Texas, June 23-26, 2005. Hosted by our area Chapters and Colonies, Chi Phi's 2005 Congress will extend a warm Texas welcome to Chi Phi's and their guests from all over the country. Bring your family and enjoy all that Texas has to offer.

Thank you for all that you have done and continue to do for Chi Phi.

Faternally,

**Michael Azarian**  
National Director  
Chi Phi Fraternity

A Publication for Contributors

Est. 2001

# trueblue



**2 | News As Big As Texas**

A Bold Nu World, great changes happening at the University of Texas

**7 | Texas Chapter Spotlight**

Chapters and Colonies are rising stars in Texas

**10 | Eight Great People Moving Chi Phi Forward**

Meet the National Office Staff and learn more about who they are outside of Chi Phi

**16 | Return On Alumni Investment**

How is your investment helping the Fraternity

**17 | Fraternity Donor Listing**

**25 | Trust Donor Listing**

**31 | Zeta Theta Colony: Our Journey From Colony To Chapter**

The struggles and joys of one Chi Phi Colony

**33 | 2005 Wilderness Academy...Test Yourself**

Chi Phi's newest leadership program for undergraduates and alumni

**35 | Alumni Spotlight**

Making copies...a Chi Phi member's role in this great invention

The mission of True Blue is to illustrate the impact of philanthropy, provide direct access to Chi Phi's leaders, and feature special in-depth stories of interest to stakeholders of Chi Phi.

**Winter/Spring 2005 Issue  
Vol. 5, No. 1**

**Chi Phi Fraternity  
& Chi Phi Educational Trust**

850 Indian Trail Road, NW  
Lilburn, GA 30047-6866  
(404) 231-1824  
(404) 237-5090 fax  
www.chiphi.org

**Editor:**

Michael Azarian, Psi Delta 1997

**Managing Editor:**

Kim Godwin, Delta Zeta Sorority



**North-American Interfraternity Conference**



**College Fraternity Editors Association**

**Contributors:**

Kason Escobedo, Psi Zeta 2007

Raul Faz, UIW Colony 2005

Michael Gorman, Schreiner Colony 2005

Steven Hopkins, Nu 1999

Rich Kuerston, Mu Zeta 2002

Will Malcolm, Zeta Theta 2006

Ryan Schilhab, Lambda Zeta 2007

Bret Austin Smith, Theta Zeta 2005

Brian Tendlinger, Sigma Phi Epsilon Fraternity

Owen Whitehurst, Gamma 2006



**NEWS  
AS BIG AS**

**S**

**A**

**X**

**E**

**H**



# A Bold Nu World

Steven W. Hopkins, Nu 1999

The Nu Chapter of Chi Phi celebrated its 113th year of existence on March 10, 2005. Seldom, if ever, in its long history has the chapter experienced a more exciting period. Nu enters this year as the fortunate beneficiary of the hard and selfless work of many dedicated brothers on a wide variety of fronts. With all of the excitement going on around Nu, there are three areas in particular that are worthy of note. First, in the area of fraternity housing, we are in the middle of our Renewing Nu Campaign, the goal of which is to provide the brothers of Nu with first-class housing and dining facilities, as well as a comprehensive alumni mentorship program. Second, the Nu Alumni Association, entering its fourth year since being reestablished in 2002, now boasts of over 70 dues-paying members. Last, but certainly not least, Nu is preparing to play the role of co-host for the upcoming 140th Chi Phi Congress in San Antonio, Texas.

The Renewing Nu Campaign has the goal not only of providing Nu with the best housing facilities on the University of Texas campus, but most importantly, of reinforcing the fraternal bonds between alumni and undergraduates. Renewing Nu's ultimate goal is to build a stronger chapter through increased alumni involvement and mentorship of the undergraduate brothers. Young men do not become Chi Phi gentlemen simply by going through the initiation process. It requires both the guidance and the assistance of Chi Phi alumni. This guidance will enrich the overall fraternal experience for our undergraduate brothers, and it will allow them to enter into the professional world both more polished and more professional than many of their contemporaries. This is, after all, the true purpose of the Renewing Nu Campaign: strengthening the bonds between the undergraduate

brothers and the alumni, in order to build a stronger chapter through stronger men.

As the Renewing Nu Campaign grows ever closer to reaching its goals, we are honored to have the inspiring leadership of so many dedicated Nu brothers in this great undertaking. Such luminaries as former Texas Governor Dolph Briscoe, Nu 1943, Jim Graves, Nu 1948, and of course, the Nu stalwart, Bill Byrd, Nu 1953, have been the inspiration behind the campaign's success. We have also had the great fortune of having the services of one of Austin's leading architects, Brother John Carlson, Nu 1963. You can see his work firsthand by viewing the accompanying color rendering of the proposed new Nu house. It is one thing to talk about a new house. It is quite another to see the dream brought to life in full color. The Renewing Nu Campaign is in full swing now, and to learn more about it, please contact Steve Hopkins, Nu 1999, at 512-589-5800.

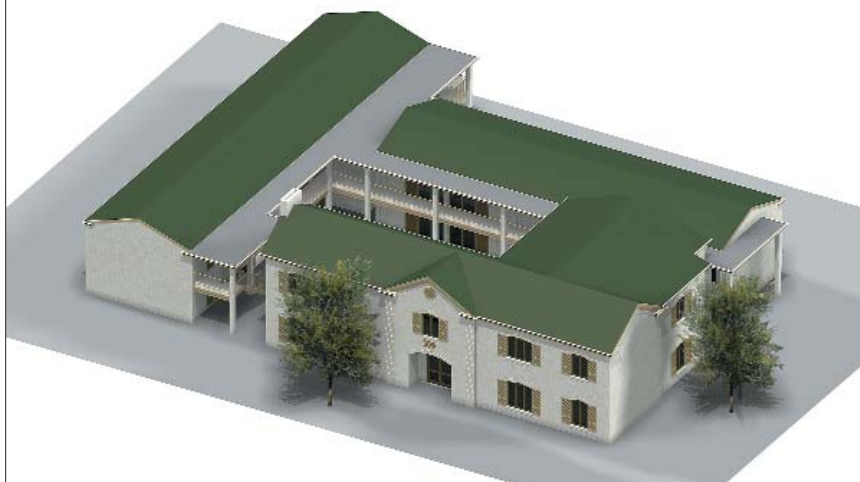
Members of the Nu Alumni Association enjoying a pre-football game tailgate at the 2004 Founders Weekend event with Grand Alpha-Elect Rich Lane



The Nu Alumni Association has experienced phenomenal growth since being reestablished on August 10, 2002. In that time, membership has swelled to over 70 brothers. To put it in perspective that means that one out of every eight living Nu alumni is members of the alumni association. Thanks to continued alumni support, the alumni association has been able to publish a semi-annual newsletter, Nu Frontiers. This newsletter focuses on alumni news and events, as well as news from the active chapter. It has been very well received, and it has helped our alumni stay in touch with each other.

One of the most unique and special events held by the Nu Alumni Association, is our annual parent/alumni gathering. At this event, dubbed Nu Founders Weekend, Nu undergraduate brothers, Nu alumni, and their families gather at the chapter house in Austin and enjoy the fraternal camaraderie with numerous events, including a Longhorn football game. An important part of our Founders Weekend celebration is the Order of 1892 ceremony. Named for the year of our chapter's founding, the Order of 1892 is an honor bestowed upon Nu alumni who remain involved with our fraternity and play a role in mentoring and guiding the young men of our chapter. The emotional highpoint of the Order of 1892 ceremony is a brief recitation of Nu Chapter's earliest history, as recorded by an eye-witness in a Nu alumni newsletter from 1910 called the "Nu Record." We are fortunate to have an original copy of this almost one-hundred-year old document, and within its yellowed

The Renewing Nu campaign's ultimate goal — a new house for the Nu Chapter as designed by John Carlson, Nu 1963



pages is located the most detailed account of our chapter's birth that has ever been written. Traditionally, the President of the Nu Alumni Association reads this history aloud during our Founder's Weekend event for all alumni, wives, undergraduate brothers, and parents. It is then read again in the chapter ritual room during the actual Order of 1892 ceremony.

In this short ceremony, Nu alumni rededicate themselves to the founding principles of our fraternity: truth, honor, and personal integrity. At the end of the ceremony, the new initiates are presented with their official, unique, numbered badge of the Order of 1892. Membership is open to all Nu brothers who seek it, and our Order of 1892 has become a trend-setting idea, as other Chi Phi chapters have used it as a template to create their own alumni organizations and to help foster alumni involvement and participation. The concept has been so well received, in fact, that Brother Rich Lane, the Grand Alpha-Elect, specifically requested membership into our Order, and we were honored to initiate him at the Founders Weekend event last year.

Looking ahead to this summer, Nu is proud to be a co-host, along with all other Chi Phi chapters and colonies in the states of Texas and Oklahoma, of the 140th Chi Phi Congress in San Antonio. This fantastic event will take place from June 23-26, at the St. Anthony Wyndham Hotel next to the picturesque and world famous San Antonio Riverwalk. This will be the first Congress held in Texas since 1992, and we hope Chi Phi's from all across the country will join in the festivities and experience firsthand our Texas hospitality. There is no place quite like the San Antonio Riverwalk, and if you have never experienced it, there will never be a better time than this summer!

In conclusion, it is certainly an exciting time to be a Chi Phi in the state of Texas. The tireless dedication of so many brothers has made Nu's future bright indeed. Thank you for allowing me the time to share with you some of the fantastic events going on in and around the Nu Chapter of Chi Phi. To learn more about the Renewing Nu campaign, or the Nu Alumni Association, please contact me at 512-589-5800 or via email at [stevewh99@sbcglobal.net](mailto:stevewh99@sbcglobal.net). Best wishes and I look forward to seeing you in Texas this summer!

# The Stars are Bright on Chi Phi

Deep in the heart of Texas is a symbol of perseverance, dedication, and loyalty. It's a connection between the past and the future. What was, and what is possible for the future. It's called San Antonio. As Chi Phi continues on its quest for fraternal excellence, what better place to gather than the Alamo City?

No other city captures the splendor of Texas like San Antonio. At its epicenter is a vibrant downtown: a collection of skyscrapers, monuments, shopping, fine dining, and an eclectic collection of people. From the Alamo to the Riverwalk, San Antonio reverberates with a respect for the past with an excitement for the future. Currently the eighth largest city in the United States, San Antonio's rich history and heritage will provide an impressive backdrop for Chi Phi's 140th Congress. Hosted by our area Chapters and Colonies Chi Phi's 2005 Congress will extend a warm Texas welcome to Chi Phis and their guests from all over the country.



Chi Phi first grew roots in Texas in 1892 with the birth of Nu Chapter at the University of Texas. Now five other Chi Phi Chapters and Colonies make Texas one of the most Chi Phi populated states in the nation. In fact, over 1300 Chi Phis make the Lone Star State their home.

Chi Phi will descend upon San Antonio for a four day Congress like no other. Our host for the weekend will be the St. Anthony Wyndham, only blocks from the famous Riverwalk. At \$109 per night, our stay in San Antonio will be a Texas-sized bargain.

There is something for everyone from organized group outings to free time for self-directed exploration.

**140<sup>th</sup> Chi Phi  
Congress**

San Antonio, Texas • June 23-26, 2005

# CHI PHI

## *Leadership*

# VISITS

## *the State of*

# TEXAS



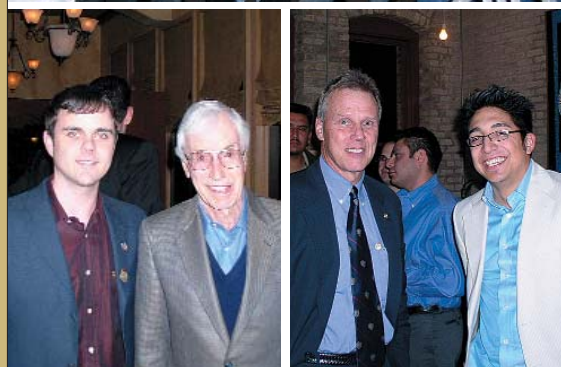
National Director Michael Azarian, Psi Delta 1997, along with Educational Trust Chairman Jim Soderquist, Alpha 1967, and Grand Alpha-Elect Rich Lane, Kappa Zeta 1993, began a four-

day swing through the state of Texas. We had the privilege of visiting the lovely home of Mr. and Mrs. Joel Shannon, Nu 1968, to attend a meeting of the Ten O'Nine Housing Corporation for the University of Texas. The meeting consisted of discussion surrounding the future renovation project at Nu Chapter at University of Texas. The meeting was also attended by Ron Sponberg, Nu 1972, Jim Graves, Nu 1948, and Ben Grieg, Nu 1945.

The next evening Rich, Jim and Michael attended an alumni event on Friday evening at Live Sports Bar and Café in the downtown Houston area. The event was hosted by the Houston Chi Phi Club and planned by Al Jameson, Nu 1999. Other guests included former National Staff member Mike Bayliss, Nu 1987.

Early Saturday morning we departed Houston and began our drive into San Antonio. We were lucky enough to spend the night at the St. Anthony Wyndham. The St. Anthony will be the host of the upcoming 140th Chi Phi Congress in San Antonio, Texas. The afternoon was spent touring the gorgeous property and concluded with a stroll around the Riverwalk. Please plan to join us this summer for an inspiring fraternal event. Later that evening, an alumni event was held at Zuni Grill on the San Antonio Riverwalk. The event was hosted by the newly formed San Antonio Chi Phi Club. For more information on the San Antonio Chi Phi Club please contact Glenn Johnson, UIW 2004, at [gleingo@hotmail.com](mailto:gleingo@hotmail.com).

After approximately 470 miles, we ended our trip in Dallas, Texas. After an early arrival we drove into downtown Dallas and watched the Philadelphia Eagles play the Atlanta Falcons for the NFC Championship. After the game we attended an alumni event planned by Steve Hopkins, Nu 1999, and Devane Clarke, Nu 1950, at Al Biernats Steakhouse.



(Left to Right) Texas Chi Phi's gathering with Michael Azarian, Jim Soderquist, and Rich Lane; San Antonio Alumni Gathering with Michael Azarian; Steven Hopkins, Nu 1999 and DeVane Clarke, Nu 1950 at alumni event; Jim Soderquist, Alpha 1967 with Cisco Iquaran, Lambda Zeta 2005 in San Antonio.



# Texas Chapter Spotlight

## Lambda Zeta Chapter

The Lambda Zeta Chapter of Chi Phi at St. Mary's University has been doing many things over the past year, including getting their numbers back up. The chapter graduated 10 men over the past two semesters, two of which have become their new alumni advisors. Spring rush 2004 brought in a new pledge class of nine men, four of which are on the executive board, including the new Alpha, Delta, and Epsilon. Fall rush 2004 brought in a class of three new men, two of which hold office, including the new Gamma and Social Chair. With such a young fraternity, the men of Lambda Zeta have been working hard to establish themselves and get new activities underway. They have hosted philanthropic events such as Habitat for Humanity and working at the community food bank over Christmas. They have set up a few mixers and other social events. They also have worked hard to recruit the new class of seven men that is currently pledging this semester.

The men of Lambda Zeta are very active in their roll with the National Office of Chi Phi. They sent delegates to both Congress and COE this past summer.

They also recently helped host the RLA for spring of 2005, along with the brothers of Incarnate Word Colony, who were the primary hosts. Lambda Zeta is looking forward to helping host Congress this coming summer, which will also be held in San Antonio. The chapter will also assist with the expansion presentation at Texas State University - San Marcos in late March. The brothers of Lambda Zeta are excited about the future of their chapter and are working hard to make that future a bright one.

## Ryan Schilhab, Alpha

Lambda Zeta Chapter assists  
National Office at Texas State  
University - San Marcos  
Expansion Presentation.



### Psi Zeta Chapter

In the past year the Psi Zeta Chapter has made many strides toward reaching our set goals. Between throwing a Halloween party and giving a hand at the Humane Society, we have had a lot on our plate. Although we have few members, the Psi Zeta chapter has volunteered many hours at the Boys and Girls Club. We are looking forward to another trip there soon! We have also adopted a highway.

The future of our Chapter is bright indeed. The remaining months of the semester will be focused on fundraising. We are continuing our trash pickup service and will be communicating to local businesses about distributing advertising for them around the Dallas area. The Psi Zeta chapter has weekly poker games for anyone who wants to play. We were recently the beneficiaries of a tournament held with the alumni. Last year we earned second place at Greek Week. This year we will settle for nothing less than first place. Things are going quite well in Dallas, Texas, and we continually strive to make it better.

**Kason Escobedo, Alpha**

Schreiner chi phi - colony members  
at new member ceremony



University of Incarnate Word Colony prior to an event.

### Schreiner Colony

The Schreiner Colony has been very busy this year. In October, the group participated in an alcohol awareness program called "Mocktail." Student organizations, including the Schreiner Colony, entered their best nonalcoholic mixed drink in a competition. We took home the award for "Most Creative Table" and "Best Drink." Brother Cory enjoyed the event, "I had a lot of fun," he said, "watching all the brothers and the new members work together on having the best table was great!"

Over the family weekend, the Schreiner Colony usually hosts a car wash to raise money to send our members to congress and COE, but this year, prior to our annual car wash; the colony learned that many families in Saltillo Mexico live in makeshift houses on the southern edge of the city limits, at approximately 5,500 feet elevation. These dirt-floor houses, which have no doors, windows, running water, or electricity, offer little protection from the approaching winter session. The Schreiner Colony was able to raise well over \$100 to purchase blankets for the families of Saltillo.

This past February, the Schreiner Colony doubled its size to 16 members after inducting its second largest new-member class in its history. It was a very successful informal recruitment week which in the past has produced only one or two new members. The colony is working extremely hard on our petition for charter as well as on the application for the Thomas Gehring Award.

**Michael Gorman, Delta & Zeta**

## Theta Zeta Colony

Texas A&M is home to some of the best students and traditions ever established in a school. We have a kindred brotherhood that can only be outdone by the love for our fraternity and the various activities that we do together. Over the past year, Theta Zeta experienced some hardships, but they did nothing more than bring us together and make us stronger.

In the past year our chapter brothers participated in various activities which represent both our school and the spirit of Chi Phi. We participated in our school's intramural sports for flag football, attended many crush and formal functions, and supported our local philanthropy, The Barbara Bush Parenting center. We arranged a number of Thanksgiving packages of food for the needy, along with the help of the Gamma Phi Betas, and donated time to help in the community. As of last week we were chosen to be one of the groups that will sponsor street clean-up in College Station. Later in the spring we anticipate a mid-semester four-man pledge class in the tradition of year-round recruitment. We are strong as a unit of Brothers, holding to the traditions of Chi Phi, willing to do what we can to make this world better.

**Bret Austin Smith, Eta**

## UIW Colony

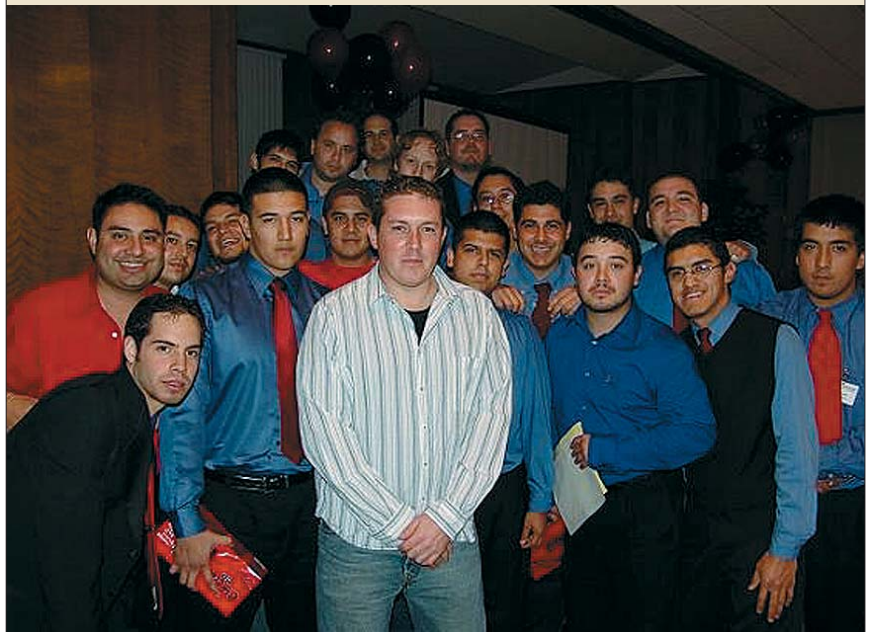
This past November, the UIW Colony invited Mark Sterner to Incarnate Word to speak about the horrors of drunk driving. Mark has giving his presentation "DUI: A Powerful Lesson," to college campuses all around the nation and the brothers of Chi Phi were happy to welcome him to the Incarnate Word campus. In December, the Chi Phi Colony held a toy drive on campus to help youth around San Antonio to have a happy holiday. Brother Glenn Johnson has had an eventful time as of late. In December, Brother Johnson married Marci Joy Mullins. He then became the first Chi Phi to be installed in the Senior Installation Ceremony at a Chi Phi National Event, COE 2003 Nashville, TN. Brother Johnson also established the UIW Alumni Association in 2004 and is in the process of establishing a working body. Alumni from St. Mary's University, Lambda Zeta Chapter, are also looking to establish a San Antonio Alumni

Association. Brother Johnson is contacting local and national alumni for hosting a golf outing before the 140th Chi Phi Congress in San Antonio, TX. The golf outing will take place on Thursday, June 23rd. If you are interested in reuniting old friendships and starting new ones, or if you would like to help the Colony in achieving the goal of Chartering, please contact Brother Johnson at [gjohnson@chiphi.org](mailto:gjohnson@chiphi.org) or the Chi Phi National Office.

**Raul Faz, Zeta**

# Texas Chapter Spotlight

UIW colony members with Mark Sterner (keynote speaker at College of Excellence 2003 & 2004)



# The National Office Team: **eight great people** *Moving Chi Phi Forward!*

When you tell most people that you work for a Fraternity, they usually expect you to follow with a punch-line. Few people see how many hours and how many people it takes to keep such world-class and world-wide organizations moving. With over 54,000 initiates, two semi-annual magazines, two major events, a website, 63 “franchised” Chapters and Colonies, and a number of annual budgets exceeding \$1 million, running any sizable membership-driven organization takes both time and energy. But just like any company, it also takes the right people in the right roles to get the job done. It takes a great team.

**Brian Tenclinger**  
**Director of Undergraduate Services**  
**Sigma Phi Epsilon Fraternity**

Brian is truly a kid at heart. He was born and raised in Chicago, spoils his nephews and niece endlessly, and has more toys in his office than anyone you’ve ever seen. He’s sharp as a tack, very well educated, and brings a wealth of experience and interfraternal knowledge to the National Office team. He’s only worked for Chi Phi since October, but he’s already had an amazing impact on the Fraternity. As Director of Undergraduate Services, Brian is responsible for all areas of expansion, risk management and reduction, regional and national programming, and curriculum development.

Brian comes to Chi Phi’s staff after spending

over 10 years in academe working as a Director of Greek Life. He’s worked at Texas A&M, Florida State, Tulane, and Iowa State. He was awarded a Bachelor’s degree from Northern Illinois University and a Master’s degree from Northwest Missouri State University. He’s currently pursuing a Doctorate of Education from Texas A&M University.

Brian says that the “never-a-dull-moment” aspect is what he likes most about working for Chi Phi. “Each phone call or email message brings a new opportunity, question, or challenge. Each visit to a chapter provides me with the opportunity to do what I do best—challenge and inspire students and student organizations to become their best.”

“I live for college football!” Brian proudly pro-



claims. When not working (or watching football), Brian says he enjoys traveling, cooking, working out, reading books about notable people and leadership concepts, and learning about other cultures. His favorite college teams include Florida State, Iowa State University, and Notre Dame. "I'm also from one of the greatest sports cities in America: Chicago. I grew up watching the Cubs and White Sox, and when Jordan was flying through the air, I was a closet Bulls fan."

#### Brian's Favorite Quotes

"It is possible to move a mountain by carrying away small stones." — Chinese Proverb

"Dream. Dare. Believe. Do." — Walt Disney

on as an intern during the summers of 2000 and 2001. After graduation I interviewed and was offered a full-time position. I am extremely grateful to Brothers Runkel and Langley for the experiences that my involvement has granted me and for the friendships I've developed along the way. I get to work in a values-based environment and with people that I truly care about. The most significant part of my job, however, is the true brotherhood that I've built with hundreds, if not thousands of Chi Phis across the nation. Some of them I only see once or twice per year, but somehow it seems that we always pick up where we left off. It's really amazing how our bonds remain strong across time and distance."

"When I first started working for Chi Phi, it seemed like there were mountains that needed to be



(Left to Right) Brian Tenclinger, Director of Undergraduate Services; Rich Kuerston, Director of Membership Development.

#### Richard Kuerston Director of Membership Development Mu Zeta Chapter - University of Denver

Rich, born and raised in Tulsa, has been an avid hockey player and fan since elementary school. He's in his third year on Chi Phi's staff, and has now visited all but four Chi Phi Chapters. He'll be the first to engage you in a hearty political debate, and he's usually quick to tell you a joke. His current role includes responsibility for all membership development initiatives, such as the New Member Resource Books, the Men of 1824 Program, and the Goliard Program. Like Brian, he conducts Chapter and Colony visits, developing Chi Phi groups around the nation. He's also the resident ritualistic guru.

"I first became involved with the national organization while Brother Steve Runkel was Grand Alpha," recounts Brother Kuerston. "Steve put me in contact with Adam Langley, who asked me to come

moved every day. We've accomplished a lot since then. Our New Member Resource Books are now the envy of our competition. We've come out with a new website, an officer resource CD, and had an amazing boom in participation at Chi Phi's events and programs. We've also grown to our largest size ever, opening some amazing colonies and reopening several dormant Chapters. One of my best memories happens to be the 2003-2004 academic year — our first year without losing a single Chapter or Colony in decades."

Rich holds a bachelors degree from the University of Denver. "We're the current NCAA Hockey Champions," he quickly reminds anyone that asks about his alma mater (and most that don't). When he isn't working for the Fraternity or picking a political debate with just about anyone,

Rich is likely to be found playing X-Box, sitting at a poker table, or taking his dog Aspen to the park. "I'm also an avid hockey player and fan."

#### Rich's Favorite Quote

"This above all: to thine ownself be true, and it must follow, as the night the day, thou canst not then be false to any man." — Lord Polonius in Shakespeare's Hamlet.

#### Kim Godwin, Communications Consultant Delta Zeta Sorority

Kim, a true southern belle, was born in Nashville. She loves riding her horses and playing with her dog. She's also in her rookie year on the Chi Phi staff. Don't let that fool you, however; she brings

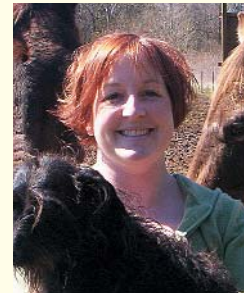
my greatest passions. Fraternities and sororities can offer so much to a person both during and after college, and I am glad that I am able to continue helping others get out of their experience what I have gotten from mine."

Before working for Chi Phi, Kim worked as a campus professional in Greek Affairs at Western Kentucky University. She was also Coordinator of Student Activities and Greek Life at University of Missouri — Rolla. Most recently, Kim served as Director of Greek Life at Middle Tennessee State University. A true community servant, Kim also spent time working with the Rutherford County Rape Recovery and Prevention Center doing educational and community awareness programs.

Kim started her higher education at Samford

#### Kim's Favorite Quote

"Nothing can be loved or hated unless it is first understood."  
— Leonardo da Vinci



over seven years of experience in higher education. She's responsible for all aspects of Fraternity communications including The Chi Phi Chakett, the True Blue, the Chi Phi Grapevine, and Chi Phi's home on the web, [www.chiphi.org](http://www.chiphi.org). Her extensive background in student affairs has equipped her well to conduct Chapter and Colony visits, specializing in Colonies and smaller Chapters.

Brothers Bob Walker, Iota Delta 1970, and Jim Davis, Omega 1975, were the first to encourage Kim to send her resume to the Fraternity. "At first I thought they were crazy," she said. "But the more they spoke with me, the better it sounded. And after speaking with Michael, I thought I would be crazy not to apply. So here I am working for Chi Phi, and I have to say I love it. This job is truly an adventure," she says. "It allows me to stay involved with one of

University in Birmingham, where she became a Delta Zeta. She finished her Bachelor's degree at Belmont University in Nashville. She later received a Master of Arts in Education from Western Kentucky University. She will complete a Specialist in Education degree from Middle Tennessee State University in May 2005.

Like Brian, Kim is a Chicago Cubs fan. A native Tennessean, she's also a Titans season ticket holder. She follows Ohio State and Auburn football, Arizona and Oklahoma State basketball, and she also enjoys listening to live music, spending time with her friends, and watching sports. "If I'm not actually at the game, I have to be somewhere watching it" she says.

Kim's family presently consists of a 7-year-old dog named George and two horses: "Alive Dancer" and "Dun Dancin'."

### **Patty Fisher, Administrative Assistant**

Patty Fisher, a Floridian by birth, is the national office's anchor. Over her five-year tenure, Patty has seen Chi Phi grow and prosper, learning more about our organization than many of our own members. Not only could she tell you what school a specific Chapter is at, she could probably tell you who some of their officers and key alumni are as well. She single-handedly handles every report completed by our Chapters, oversees the accuracy of all Chapter rosters, and manages to handle any mass-mailings that come her way.

"Patty is one of our most important staff members," says Michael Azarian, Chi Phi's National Director. "She has primary responsibility for maintaining Chi Phi's 55,000-member database. She's

a Dalmatian puppy named Rascal. She's both a mother and a grandmother, and often spends her time off with her grandchildren. She loves gardening and traveling, especially to Las Vegas. She's a fan of both the University of Miami and Florida State football, and she calls herself "a die-hard Miami Dolphins fan."

### **Mandy O'Brien, Trust Financial Assistant**

Born and raised right here in Atlanta, Mandy O'Brien handles all the financial matters for the Chi Phi Educational Trust. "When I first heard about the job, I was curious how working for a Fraternity would be such serious business. I thought it would be interesting, so I applied," says O'Brien. Six years



Left to right: Kim Godwin, Communications Consultant with George and horses; Patty Fisher, Administrative Assistant with Rascal; Mandy O'Brien, Trust Financial Assistant with daughters Sydney and Mackenzie.

probably the first person you will talk to when you call the National Office, and she calculates and deposits all donations and payments for both the Educational Trust and the Fraternity." If that weren't enough, she's also the go-to person when our Chapters need pledge pins, manuals, badges, and membership certificates.

"The paperwork was a huge mess in the beginning!" Patty jokes. "The best part however, is getting to meet all the great undergraduates and alumni. It's really a pleasure when they stop by the office, or when I get to meet them at Congress."

Before working for Chi Phi, Patty was the Office Manager for a large country club in Atlanta. She also worked in accounting for a company in North Carolina before she moved to Atlanta. She's been married to her husband, Stan, for 39 years and has

later, Mandy's still a foundation of Educational Trust operations. Part accountant, part property manager, and part communications-hub, Mandy has earned a reputation for being thorough and professional, earning both the respect and the appreciation of Fraternity and Trust leaders.

Mandy is a graduate of Georgia State University and has worked in the accounting field from early on. She worked for 10 years in the corporate accounting department and as an accountant for The Real Estate Book. When she's not busy with Chi Phi matters, she can usually be found helping her girls' Girl Scout troop, doing the books at her church, or serving as the Yearbook Editor for her girls' school. She also enjoys watching the Atlanta Falcons and loves her daughters' soccer games.

Married for almost 12 years, Mandy and her husband Bill have a 13-year-old cat named Smudge. Their daughters Sydney and Mackenzie are 9 and 5 years old, respectively.

“As a wife and mother, the best part of working for Chi Phi has to be the flexibility while keeping my accounting skills sharp,” says Mandy. “I also enjoy being part of a team that can help make college a better experience for our members.”

And yes, you read her correctly. She did refer to Chi Phis as “our members.” Not only has the National Staff managed to develop a rapport and teamwork within itself, every member identifies with his or her role in keeping the Fraternity strong. It is not at all uncommon for our members of the staff to use words like “us,” “we,” and “our.”

most enjoyable components of the job,” says Wilson.

He enjoys jogging and watching the Atlanta Braves. He’s been married for 42 years to his wife Rachel and they are the proud parents of two (now adult) children. His son Ted lives in California and his daughter Ashley lives in Atlanta.

#### **Owen Whitehurst, Member Services Intern Gamma Chapter - Emory University**

Owen Whitehurst is currently a Junior at Emory University. He’s also the Alpha of our Gamma Chapter and the National Office’s Member Services Intern. “That means I do a lot,” says Whitehurst. “I try to split my time between clerical tasks, answering undergraduates’ questions, and developing new

Owen’s Favorite Quote

“The art in politics consists of knowing precisely when it is necessary to hit an opponent slightly below the belt.”

— Konrad Adenauer



#### **Ted Wilson, Financial Assistant**

Ted Wilson, the individual responsible for handling the Fraternity’s financial matters, has worked for Chi Phi for about a year and a half. He processes all contributions, payments, and fees, while overseeing monthly invoices and staying on top of the national organization’s payables.

Ted is a graduate of Georgia State University and comes to Chi Phi’s staff with experience working as a CPA and consulting for various Atlanta area manufacturing firms. His responsibilities also include maintaining nearly 150 different Chapter and Colony accounts, producing financial reports, and keeping the organization’s financial records immaculate. “The experiences working with the rest of the staff on a day-to-day basis are definitely the

programming,” Owen says. “I’ve worked for Chi Phi since October of 2003, and really enjoy it. The other employees definitely make this job enjoyable. I also enjoy being able to see the end result of the work we do by looking at its impact on my own chapter.”

Before his current stint on staff, Owen was an intern at the White House in the Office of Intergovernmental Affairs. “Working at the White House was really an amazing experience” says Whitehurst. “Before that, I worked as a hospital technician, a UPS Store Clerk, and a construction worker.” He’s currently double-majoring in Political Science and History, with a possible minor in Arabic. After he graduates, Owen plans to attend law school.



Owen has been dating his lovely girlfriend, Anita Nagwani, since their senior year of high school. “Hopefully she will be joining me in Atlanta this summer.” As for children, Owen doesn’t have any “other than the 65 Brothers he plays dad to at Gamma Chapter,” but he does have a Cairn terrier named Cody.

#### Owen's Favorite Quotes

“The more you sweat in training, the less you bleed in battle.” — Sun Tsu

“Freedom is not free.” — Unknown

“Through the years though, I’ve really grown to love working for Chi Phi. The best part is the day-to-day interaction with our members. That’s where I see us making a difference, that’s where I see Chi Phi changing the world.”

Azarian joined Chi Phi’s Psi Delta Chapter at the University of North Carolina, Charlotte. When not working tirelessly for the Fraternity, Azarian can be found playing hockey, collecting autographs, or watching movies. He’s a die-hard Mets fan, and also supports the Miami Dolphins, Phoenix Suns, and Dallas Stars. He’s been married for nearly three years to his wonderful wife, Stephanie. They live in suburban Atlanta with a Jack Russell terrier named Tito and two cats, Lilie and Andi.



Left to right:  
Owen Whitehurst,  
Member Services Intern  
with girlfriend Anita;  
Michael Azarian,  
National Director. Not  
pictured, Ted Wilson,  
Financial Assistant.

#### Michael Azarian, National Director Psi Delta Chapter University of North Carolina, Charlotte

The quarterback of Chi Phi’s team, Brother Michael Azarian has been at the helm of the National Staff for almost two years. His role as National Director includes ultimate responsibility for the National Staff, as well as oversight of the affairs of the National Office. He’s worked for Chi Phi for nearly eight years, and has held just about every position the Fraternity hires for.

Azarian was born in Pekin, Illinois. He lived in New Jersey for 12 years and North Carolina for 14 years before he moved to Atlanta with his wife Stephanie. His seven-and-a-half-year tenure on staff began in 1997 when he began working as a Chapter Leadership Consultant. “I wasn’t quite sure what I’d gotten myself into,” says Azarian. “I almost quit and went back to Charlotte” (laughs).



Please use the supplied return envelope located in this issue

Dear Brother,

Your Fraternity is leading a resurgence of Greek Life on college campuses throughout North America. Will you join with us today to help Chi Phi continue this momentum through the academic year?

Part of our success has come through a strengthened partnership between the Fraternity's Grand Council and the leaders of our charitable foundation, the Chi Phi Educational Trust. In fact, this joint letter represents an additional effort to put more of your gift to work for our undergraduate brothers.

By the time you've reviewed the brief report below, we hope that you'll want to take action to 'endorse' our efforts on the national level by making a gift in the enclosed return envelope.

#### Truth... Honor... Personal Integrity.

While we each brought these values with us to college, our experience in Chi Phi helped us to refine our understanding, from our earliest days in the Fraternity. Today's college students, in growing numbers, are choosing Chi Phi because of these values and same experience we enjoyed.

What we have is the opportunity to create a tremendous legacy in Chi Phi: creating better men — better Brothers —

through supporting the Fraternity nationally.

When you support Chi Phi, you join a growing number of 'investors' in the nearly 2,000 young men who proudly wear the XΦ letters on more than 60 college campuses.

#### The Chi Phi Fraternity The Chi Phi Educational Trust

##### Return on Alumni Investment

**Re-Charterings:** Teamwork and collaboration between dedicated volunteers and the National Office staff have allowed us to restore the charters of Alpha Theta Chi Chapter (Nebraska), Omega Chapter (Georgia Tech) and Phi Lambda Theta Chapter (Bucknell).

**Membership Growth:** We've continued to grow ahead of other NIC fraternities, seeing an annual membership increase of five percent since 2002.

**College of Excellence:** The last annual COE was held in Nashville in July. In odd-numbered summers, Chi Phi will begin hosting its National Wilderness Experience, a brand new Brother and Leadership Development Program.

**National Leadership:** Rich Lane (Kappa Zeta, Purdue) was elected as Grand Alpha-elect this past summer, and will begin his term in the summer of 2005.

Guided by their Chi Phi experience, these Brothers will become tomorrow's professional leaders, community servants and role models.

**National Office:** Michael Azarian became Chi Phi's 8th National Director last February. Among his first actions was to hire Brian Tenclinger as the new Director of Undergraduate Services. Planned hires include a Director of Communications and a Director of Alumni Development. All of these positions will help Chi Phi better serve its 41,295 undergraduate and alumni brothers.

Please join with us right now to continue the long-standing tradition of Brothers Helping Brothers. You can use the attached Gift Form to make your generous gift and add Chi Phi to your charitable giving 'portfolio' today.

Fraternally,

Ronald P. Frank Nu Delta 1983  
Grand Alpha

Dr. James P. Soderquist Alpha 1967  
Chairman, Education Trust



**Yes!**

I am happy to give the following donation to support the future success of Chi Phi and allocate those funds to assist in the following area:

- |   |  |
|---|--|
| <input type="checkbox"/> \$2,000 Gladfelter Circle  | <input type="checkbox"/> Chi Phi Fraternity        |
| <input type="checkbox"/> \$1,000 Presidential Order | <input type="checkbox"/> Chi Phi Educational Trust |
| <input type="checkbox"/> \$500 Golden Order         | <input type="checkbox"/> 50/50 split               |
| <input type="checkbox"/> \$250 Scarlet Order        |  |
| <input type="checkbox"/> \$100 Blue Order           |  |
| <input type="checkbox"/> \$50 NAA Member            |  |
| <input type="checkbox"/> _____ (other amount)       |  |

Truth... **Honor...**  
Personal Integrity...

#### Payment Information:

- ☐ Check Enclosed  
☐ Credit Card:  
☐ VISA   ☐ MasterCard   ☐ American Express   ☐ Discover

Card Number

Exp. Date

Signature

Gifts made to Chi Phi Fraternity are not tax-deductible as charitable contributions under IRS guidelines. Gifts made to the Chi Phi Educational Trust qualify as Charitable contributions under IRS guidelines.



**Fraternity Donor Listing**  
**January 1, 2004-March 31, 2005**

**1000.00 +**

**Alpha Chapter, University of Virginia**  
James P. Soderquist D.D.S., Alpha 1967

**Alpha Delta Chapter, Pennsylvania State University**

Andrew W. Schultz Sr., Alpha Delta 1960

**Theta Delta Chapter, University of Florida**

Alfred C. Warrington IV, Theta Delta 1958

**Kappa Delta Chapter, University of Rochester**

George M. MacDonald, Kappa Delta 1971

**Sigma Delta Chapter, University of California, Davis**

Lawrence E. Green, Sigma Delta 1972

**500.00-999.99**

**Alpha Chapter, University of Virginia**  
George R. Langford, Alpha 1950

**Gamma Chapter, Emory University**

Baxter P. Jones, Gamma 1979

**Eta Chapter, University of Georgia**

Willis G. Ryckman III, Eta 1966

**Iota Chapter, Ohio State University**

Ross S. Shoolroy, Iota 1939

**Alpha-Chi Chapter, Ohio Wesleyan University**

Raymond E. Scroggins, Alpha-Chi 1948

**Psi Delta Chapter, University of North Carolina, Charlotte**

Michael J. Azarian, Psi Delta 1997

**250.00-499.99**

**Alpha Chapter, University of Virginia**

Richard F. Aufenger Jr., Alpha 1951

Gil Hudnall, Alpha 1968

Edward Owen Parry Jr., Alpha 1965

**Beta Chapter, Massachusetts Institute of Technology**

Dr. Manuel A. Casiano, Beta 1978

James C. Edgerton, Beta 1966

Denman K. McNear, Beta 1948

**Gamma Chapter, Emory University**

Thomas R. McKinney, Gamma 1966

Donald L. Mize, Gamma 1969

Robert K. Purks, Gamma 1960

**Zeta Chapter, Franklin & Marshall College**

Dr. Lee P. Haacker, Zeta 1956

**Eta Chapter, University of Georgia**

Thomas A. Arrendale III, Eta 1979

**Lambda Chapter, University of California, Berkeley**

Jonathan W. B. Cosby, Lambda 1967

**Mu Chapter, Stevens Institute of Technology**

John K. Murtagh, Mu 1975

**Nu Chapter, University of Texas**

James B. Graves, Nu 1948

Edward L. Morris III, Nu 1989

Matthew S. Newkirk, Nu 1987

James J. Tarpey Jr., Nu 1951

**Omicron Chapter, Yale University**

Dr. John C. Robinson, Omicron 1943

**Rho Chapter, Lafayette College**

Richard S. Gilbert, Rho 1962

**Sigma Chapter, University of Illinois**

Paul Armstrong II, Sigma 1954

**Phi Chapter, Amherst College**

George E. Keith Jr., Phi 1958

**Omega Chapter, Georgia Institute of Technology**

David A. Crawford, Omega 1960

George B. Dunbar, Omega 1951

Timothy D. Semones, Omega 1981

**Alpha-Tau Chapter, University of Michigan**

Thomas C. Barrett, Alpha-Tau 1965

**Alpha-Chi Chapter, Ohio Wesleyan University**

Thomas M. Muchmore, Alpha-Chi 1948

Dr. Raymond C. Thweatt, Alpha-Chi 1955

**Eta Delta Chapter, University of Southern California**

Barry L. Blodgett, Eta Delta 1969

**Iota Delta Chapter, Indiana University**

Dr. Phillip G. Mosbaugh, Iota Delta 1960

**Delta Xi Chapter, West Virginia Wesleyan College**

Francis R. Millar, Delta Xi 1971

**Rho Delta Chapter, Oglethorpe University**

Karl Burgess DDS, Rho Delta 1978

**100.00-249.99**

**Beta Chapter, Massachusetts Institute of Technology**

Paul M. W. Bruckmann, Beta 1942

James W. Bueche, Beta 1960

Douglas A. Cassell, Beta 1962

Steve L. Johnson MD, Beta 1955

Newell H. McCuen, Beta 1941

Richard M. Tavan, Beta 1970

**Gamma Chapter, Emory University**

J. S. H. Aiken, Gamma 1950

Jay M. Bass, Gamma 1976

John M. Cogburn Jr., Gamma 1963

Dr. James G. Kenimer, Gamma 1966

Thomas E. Rackley, Gamma 1961



#### **Delta Chapter, Rutgers University**

Richard S. Crowley, Delta 1955  
Rev. John Hart, Delta 1943

#### **Epsilon Chapter, Hampden-Sydney College**

John B. Long, Epsilon 1938  
Christopher P. Stuart, Epsilon 1987

#### **Zeta Chapter, Franklin & Marshall College**

Samuel M. Altdorffer, Zeta 1950  
Walter E. Bastian, Zeta 1950

#### **Eta Chapter, University of Georgia**

James H. Bradford, Eta 1954  
Robert F. Cunningham Jr., Eta 1952  
J. Frank Kelley III, Eta 1954  
John S. Lewis, Eta 1965  
Robert E. Mozley, Eta 1948  
James H. Rasnake Jr., Eta 1961  
Hon. Carl E. Sanders, Eta 1945  
Wilton E. Sweetin, Eta 1948  
Ronald B. Wolff, Eta 1967

#### **Theta Chapter, Rensselaer Polytechnic Institute**

Stuart L. Currier, Theta 1952  
Bruce M. Dingman, Theta 1969  
Rodney Edwards, Theta 1928  
Edward A. Stephany, Theta 1953

#### **Iota Chapter, Ohio State University**

Stephen E. Andrews, Iota 1970  
Bernard S. Brockhage, Iota 1954  
John D. Collier, Iota 1986  
Bruce C. Graber, Iota 1962  
Thomas W. Guinther, Iota 1972  
William H. Ingram, Iota 1961  
Todd J. McMillan, Iota 1951  
Charles W. Thomas, Iota 1954

#### **Kappa Chapter, University of Wisconsin**

Thomas J. Formolo, Kappa 1986  
Peter T. Lillegren, Kappa 1965  
Stanley L. Loose, Kappa 1950  
Bruno J. Mauer, Kappa 1955  
James A. McMillin, Kappa 1963

Donald L. Stehr, Kappa 1947  
Wesley C. Stehr, Kappa 1942  
John H. Underwood, Kappa 1981  
Timothy J. Wipperman, Kappa 1970

#### **Lambda Chapter, University of California, Berkeley**

Lt. Col. Arthur E. Burns III, Lambda 1962  
Kenneth S. Defiebre, Lambda 1960  
Michael A. Farnam, Lambda 1986  
Edwin A. Grebitus Jr., Lambda 1950  
Robert M. Haaf, Lambda 1950  
John W. Lowe, Lambda 1950  
James R. Moore, Lambda 1933  
James D. Nichols, Lambda 1976  
Paul W. Purdom, Lambda 1950  
K. Hart Smith, Lambda 1940  
Donald R. Watts, Lambda 1939  
John C. Wiesner, Lambda 1958

#### **Mu Chapter, Stevens Institute of Technology**

Rocco Henry Carnevale, Mu 1980  
Douglas S. Howie, Mu 1983  
CDR. Ralph R. Nebiker USN, Mu 1965

#### **Nu Chapter, University of Texas**

Robert C. Briggs, Nu 1969  
B. Devane Clarke Jr., Nu 1950  
Earle D. McCullough Jr., Nu 1949  
Christopher G. Pagel, Nu 1988  
Thomas H. Thompson, Nu 1967

#### **Xi Chapter, Cornell University**

John B. Babcock, Xi 1945  
Richard T. Groos, Xi 1953  
Richard T. Hough, Xi 1946  
Donald F. Mayer, Xi 1953

#### **Omicron Chapter, Yale University**

James F. Clark Jr., Omicron 1955  
Charles F. DeGanahl II, Omicron 1943  
Raymond J. Wean Jr., Omicron 1943

#### **Pi Chapter, Northwestern University**

Dr. Robert P. Christopher, Pi 1954  
Scott M. Gillard, Pi 1999

#### **Rho Chapter, Lafayette College**

William W. Curtis Jr., Rho 1949  
James J. Flannery, Rho 1969  
Joseph R. Reichard Jr., Rho 1968

#### **Sigma Chapter, University of Illinois**

Donald J. Babicz, Sigma 1955  
James L. Calder, Sigma 1955  
Hon. Larry L. Lessen, Sigma 1961  
Lawrence B. Shappert, Sigma 1954

#### **Tau Chapter, University of Alabama**

Joseph M. Houston, Tau 1950  
Hon. John S. Johnston Jr., Tau 1972  
William W. McDonald, Tau 1951  
Ray J. Moore Jr., Tau 1962  
James C. Parker, Tau 1962  
J. Wray Pearce, Tau 1966  
Charles M. Rampacek, Tau 1965  
John B. Scott Jr., Tau 1952

#### **Chi Chapter, Dartmouth College**

Donald R. Wagner, Chi 1952

#### **Psi Chapter, Lehigh University**

Bruce Adam, Psi 1961  
John S. Booth III, Psi 1992  
Roger M. Stewart, Psi 1939  
P. Aarne Vesilind, Psi 1962

#### **Omega Chapter, Georgia Institute of Technology**

Tazwell L. Anderson Jr., Omega 1960  
Brian R. Betkowski, Omega 2000  
Henry C. Buttery Jr., Omega 1945  
James C. Davis, Omega 1975  
Rodger W. Dodson, Omega 1961  
Rutherford L. Ellis Jr., Omega 1949  
Joseph A. Kasprzak Jr., Omega 1974  
Michael J. Molinari, Omega 1997  
William W. Ranck, Omega 1961  
Philip M. Reed Jr., Omega 1967





Bolling H. Sasnett Jr., Omega 1951  
Robert O. Seitz Jr., Omega 1968  
David L. Skelton, Omega 1980  
Herbert C. Skinner Jr., Omega 1959  
Christopher J. Swenson, Omega 2001  
Thomas L. Thompson, Omega 1961  
Stephen P. Tolleson, Omega 1969  
James A. Warren Jr., Omega 1976

#### **Alpha-Alpha Chapter, University of North Carolina, Chapel Hill**

Gregory P. Chrisafis, Alpha-Alpha 1967  
Norman A. Hull-Ryde, Alpha-Alpha 1952  
Robert R. Mauldin, Alpha-Alpha 1959  
I. Ray McDonald Jr., Alpha-Alpha 1988  
Joseph W. Walker, Alpha-Alpha 1956

#### **Alpha-Tau Chapter, University of Michigan**

M. Douglas Dunn, Alpha-Tau 1967  
John S. Flintosh, Alpha-Tau 1959  
Adam Hameed, Alpha-Tau 1989  
Thomas R. Kemp, Alpha-Tau 1988  
Robert N. Klaffke, Alpha-Tau 1978  
John P. Richardson, Alpha-Tau 1937  
Dr. Charles L. Smith, Alpha-Tau 1954  
Benjamin F. Sproat, Alpha-Tau 1948

#### **Alpha-Chi Chapter, Ohio Wesleyan University**

David A. Alspaugh, Alpha-Chi 1992  
Reginald M. Brooks, Alpha-Chi 1946  
Thomas R. Wilson, Alpha-Chi 1970  
Nathan Wolinsky, Alpha-Chi 1969

#### **Alpha Delta Chapter, Pennsylvania State University**

Richard A. Marsteller, Alpha Delta 1963  
Alex W. Smith Jr., Alpha Delta 1949

#### **Gamma Delta Chapter, University of Minnesota**

Harold J. Borak, Gamma Delta 1959  
Jerome K. Corrigan, Gamma Delta 1948  
Burton J. Iverson, Gamma Delta 1950  
James A. Telinda, Gamma Delta 1969

#### **Delta Delta Chapter, University of California, Los Angeles**

D. Ross Dodson, Delta Delta 1953

#### **Epsilon Delta Chapter, Oregon State University**

John S. Ferguson, Epsilon Delta 1954  
Dr. John J. McGuire, Epsilon Delta 1985  
Danford A. Moore, Epsilon Delta 1962

#### **Zeta Delta Chapter, University of Connecticut**

Nicholas A. Fanelli, Zeta Delta 1961  
Bernard E. Ladden Jr., Zeta Delta 1963

#### **Eta Delta Chapter, University of Southern California**

Byron E. Countryman, Eta Delta 1971  
LTC Miklos P. Koleszar, Eta Delta 1970  
Harry C. Lewis, Eta Delta 1949

#### **Theta Delta Chapter, University of Florida**

Daryl M. Carter, Theta Delta 1985  
Randolph M. Forlenza, Theta Delta 1970  
George Kanistras, Theta Delta 1963  
Randolph M. Loos, Theta Delta 1977  
O. J. McGill, Theta Delta 1950  
Dr. Donald E. Pearson, Theta Delta 1959  
Randell L. Platt, Theta Delta 1980  
Dr. Jose B. Quintana, Theta Delta 1968  
Charles R. Schumacher, Theta Delta 1953

#### **Iota Delta Chapter, Indiana University**

Jeffrey Dean Bennett, Iota Delta 1991  
Daniel A. Bowden, Iota Delta 1976  
Joseph V. Goeller, Iota Delta 1963  
Robert G. Grant, Iota Delta 1969  
Thomas L. Shriner Jr., Iota Delta 1969  
Robert C. Welch, Iota Delta 1985

#### **Rho Iota Kappa Chapter, University of Rhode Island**

Thomas J. Quinn, Rho Iota Kappa 1976

#### **Alpha Theta Chi Chapter, University of Nebraska**

Michael M. Hroch, Alpha Theta Chi 1968  
Ronald H. Niederhaus, Alpha Theta Chi 1968  
Francis D. Uryasz III, Alpha Theta Chi 1983

#### **Delta Xi Chapter, West Virginia Wesleyan College**

James R. Okonak, Delta Xi 1971

#### **Mu Delta Chapter, Auburn University**

Kevin R. Boyett, Mu Delta 1989

#### **Nu Delta Chapter, Florida State University**

Ronald P. Frank, Nu Delta 1983

#### **Sigma Delta Chapter, University of California-Davis**

Jeremy J. Donati, Sigma Delta 2002

#### **Phi Delta Chapter, University of Tennessee**

James D. Beckham Jr., Phi Delta 1969

#### **Gamma Zeta Chapter, University of North Carolina, Wilmington**

Ralph D. Ruth, Gamma Zeta 1981

#### **Delta Zeta Chapter, University of South Florida**

Dr. Mark D. Fowler, Delta Zeta 1984

#### **Phi Lambda Theta Chapter, Bucknell University**

Thomas R. Deans, Phi Lambda Theta 1955

## **50.00-99.99**

#### **Alpha Chapter, University of Virginia**

S. Frank Blocker Jr., Alpha 1950  
John P. Doherty, Alpha 1963  
David W. Marshall, Alpha 1990

#### **Beta Chapter, Massachusetts Institute of Technology**

Milton L. Almquist Jr., Beta 1954  
Hon. W. Kenneth Davis, Beta 1940



Matthew B. Debski, Beta 1999  
 Donald M. Fryer, Beta 1977  
 Lt. Col. W. L. Hartrick USA-R., Beta 1954  
 Edwin Hebb Jr., Beta 1948  
 Carlyle L. Helber Jr., Beta 1958  
 G. Farrell Ray Jr., Beta 1949  
 Dennis Rivera, Beta 1999  
 Todd C. Shauger, Beta 1990  
 John H. Wasserlein, Beta 1963

#### **Gamma Chapter, Emory University**

Robert W. Battle, Gamma 1943  
 Walter H. Beckham Jr., Gamma 1941  
 Andrew R. Fischer, Gamma 1985  
 John C. M. Grant, Gamma 1984  
 R. Preston Herren, Gamma 1964  
 Gregory A. Hurst, Gamma 1979  
 Judge Roger H. Lawson Jr., Gamma 1963  
 Hon. Alonzo L. McDonald Jr., Gamma 1949  
 William F. Morgan, Gamma 1957  
 James W. Owen, Gamma 1961  
 William J. Peterson Jr., Gamma 1940  
 David P. Reinhardt, Gamma 1980  
 John R. Strother Jr., Gamma 1957  
 Paul W. Underwood, Gamma 1971  
 Rev. Edwin M. Ward, Gamma 1950  
 Dr. Howard V. Weems Jr., Gamma 1944  
 Dr. Charlie B. Williams Jr., Gamma 1963

#### **Delta Chapter, Rutgers University**

David L. Churchill, Delta 1952  
 Dr. Raymond E. Pennie, Delta 1944

#### **Epsilon Chapter, Hampden-Sydney College**

W. Michaux Buchanan, Epsilon 1952  
 Burke H. Craver Jr., Epsilon 1969  
 Timothy C. Eller, Epsilon 1987  
 Francis M. Fowlkes Jr., Epsilon 1960  
 Henry H. McVey III, Epsilon 1957  
 Dr. Charles H. Moseley Jr., Epsilon 1952  
 Dr. Giles M. Robertson Jr., Epsilon 1964  
 Justin M. Weiner, Epsilon 2001

#### **Zeta Chapter, Franklin & Marshall College**

Richard M. Barrett, Zeta 1961  
 O. C. Hognander Jr., Zeta 1964  
 Robert L. Ransavage, Zeta 1955  
 Dr. Robert A. Renza, Zeta 1958  
 Dr. Jonathan Y. Richmond, Zeta 1962  
 Dr. Philip G. Roberts Jr., Zeta 1961

#### **Eta Chapter, University of Georgia**

Garth D. Barger, Eta 1966  
 Willis P. Dobbs Jr., Eta 1961  
 Ewell Gay III, Eta 1968  
 James G. Graves, Eta 1969  
 Dr. Chenault W. Hailey, Eta 1953  
 Hugh A. Inglis Jr., Eta 1959  
 William S. Jones Jr., Eta 1966  
 Guy H. Kelley, Eta 1981  
 John W. Kern, Eta 1957  
 Donald P. Lanier, Eta 1961  
 Guerry R. Moore, Eta 1966  
 William B. Morse, Eta 1971  
 Nathaniel G. Slaughter III, Eta 1966  
 Tom Cook Smith, Eta 1959  
 C. Eugene Staton Jr., Eta 1957  
 Richard H. Wammock, Eta 1963  
 Neal L. Williams, Eta 1958  
 James W. Wimberly Jr., Eta 1965

#### **Theta Chapter, Rensselaer Polytechnic Institute**

Robert G. Albern, Theta 1954  
 John F. Gebhardt, Theta 1981  
 Harold B. Hopkins Jr., Theta 1951  
 David P. Linhares, Theta 1964  
 Stanton E. Parrish, Theta 1944  
 Frank C. Savery, Theta 1965  
 Robert E. Wagar, Theta 1950  
 John G. Watson III, Theta 1971  
 Charles W. Wright, Theta 1961

#### **Iota Chapter, Ohio State University**

Dr. David R. Alexander, Iota 1972  
 Daniel G. Amstutz, Iota 1954  
 R. Scott Andrews, Iota 1977  
 Keith L. Babcock, Iota 1949  
 Floyd L. Barker, Iota 1954

Scott A. Cammarn, Iota 1983  
 Kevin C. Clark, Iota 1988  
 George J. Matthey, Iota 1949  
 Paul M. Meredith, Iota 1986  
 Donald M. Schindler, Iota 1966  
 Michael D. Stoner, Iota 1977  
 Dr. Manuel Tzagournis, Iota 1956  
 Walter A. Wurster, Iota 1936

#### **Kappa Chapter, University of Wisconsin**

Ernest E. Bruns, Kappa 1939  
 James O. Christenson, Kappa 1939  
 James A. Garvens, Kappa 1958  
 James C. Huber, Kappa 1950  
 Laszio P. Kaveggia, Kappa 1978  
 Glen R. Leggoe, Kappa 1977  
 Russell M. Lein, Kappa 1981  
 Robert W. Lutz, Kappa 1949  
 Theodore C. Meyer, Kappa 1981  
 Edward Rogan II, Kappa 1965  
 Gerald L. Roth, Kappa 1969  
 John H. Saemann, Kappa 1938

#### **Lambda Chapter, University of California, Berkeley**

David G. Deatherage Jr., Lambda 1987  
 Robert J. Good, Lambda 1951  
 George A. Innes, Lambda 1961  
 Kenneth A. Morrison, Lambda 1978  
 Mark E. Salamy, Lambda 1988  
 Hugh W. Steven, Lambda 1942  
 Cecil T. Thomas Jr., Lambda 1950  
 Donald M. Wiesner, Lambda 1964

#### **Mu Chapter, Stevens Institute of Technology**

Jack L. Christie, Mu 1946  
 John T. Cronn, Mu 1971  
 William H. Engle Jr., Mu 1969  
 Paul H. Floyd, Mu 1980  
 A. Anthony Garaguso, Mu 1995  
 William C. Hedges, Mu 1994  
 John C. Hiller Jr., Mu 1989  
 Roger J. Kellman, Mu 1970  
 Charles J. Kovarik, Mu 1955  
 Michael J. Martorano, Mu 1976



George Schwanhausser, Mu 1943  
J. Thomas Stypinski, Mu 1968  
Robert W. Welti, Mu 1943

#### **Nu Chapter, University of Texas**

John C. Chapman, Nu 1989  
Col. Leecroy Clifton USAF, Nu 1949  
Raymond J. Daniel Jr., Nu 1970  
Charles W. Eisemann, Nu 1962  
Jerry Fulenwider, Nu 1952  
Charles M. Garnett, Nu 1959  
Robert G. Griffin, Nu 1967  
Billy Dale Harvey, Nu 1972  
George T. McGuffey, Nu 1952  
John E. Metzenthin, Nu 1943  
Willard B. Moon, Nu 1960  
E. Eugene Scott, Nu 1957

#### **Xi Chapter, Cornell University**

Robert K. Blain, Xi 1969  
John I. Condon, Xi 1937  
Donald P. Keel Jr., Xi 1963  
Edward B. Lanman III, Xi 1938  
Richard H. Metzler, Xi 1956  
David C. O'Brien, Xi 1965  
Frederick I. Sharp III, Xi 1958  
Karl B. Wagner Jr., Xi 1962

#### **Omicron Chapter, Yale University**

Wiley Blair III, Omicron 1941  
Robert L. Edens Jr., Omicron 1945  
Andrew M. Erickson, Omicron 1960  
Carlyle N. Montanye Jr., Omicron 1949  
Benjamin T. Taylor, Omicron 1938

#### **Pi Chapter, Northwestern University**

David A. Berg, Pi 1977  
Patrick M. O'Day, Pi 1975  
Robert A. Weber, Pi 1967

#### **Rho Chapter, Lafayette College**

W. Bruce Drinkhouse Jr., Rho 1950  
John D. Lane, Rho 1941  
Richard M. Law, Rho 1952  
Harrison McAlpine Jr., Rho 1951

#### **Sigma Chapter, University of Illinois**

Alan W. Anderson, Sigma 1957  
Sean W. Biggins, Sigma 1987  
Theron S. Bushnell, Sigma 1950  
Jack R. Fontana, Sigma 1953  
George W. McFedries, Sigma 1939  
Robert H. Mersbach Jr., Sigma 1948  
Donald E. Perry, Sigma 1950  
Charles W. Studt, Sigma 1945

#### **Tau Chapter, University of Alabama**

Lloyd F. Furney Jr., Tau 1958  
John P. McGrath, Tau 1986  
Peter W. Spencer, Tau 1955  
Allen L. Terry II, Tau 1966

#### **Upsilon Chapter, Hobart College**

Thomas J. Patchett, Upsilon 1988

#### **Chi Chapter, Dartmouth College**

Henry G. Booth Jr., Chi 1963  
Robert H. Evans, Chi 1961  
Harry P. Jeffrey Jr., Chi 1959

#### **Psi Chapter, Lehigh University**

Dr. J. Robert Baum, Psi 1964  
Ralph Z. Fortney, Psi 1952  
Thomas H. Naylor, Psi 1959  
Robert A. Orben, Psi 1958  
Richard J. Rex, Psi 1964  
Tucker M. Scott III, Psi 1967  
Kent L. Straat, Psi 1959  
Jeffrey R. Turner, Psi 1986

#### **Omega Chapter, Georgia Institute of Technology**

Claud R. Caldwell Jr., Omega 1966  
Charles P. Cochran, Omega 1949  
Thomas R. Curtner, Omega 1947  
Casey B. Daniell, Omega 2000  
William Farr III, Omega 1961  
Harvey Granger Jr., Omega 1951  
Douglas M. Grimm, Omega 1962  
Frank W. Kennedy, Omega 1967  
Hugh S. Kroell Jr., Omega 1972  
Mark O. Landram, Omega 1978  
William F. Mandler Jr., Omega 1981

Eugene D. Scott, Omega 1952  
Crawford M. Sites, Omega 1948  
Jere B. Stokely, Omega 1975  
Marshall J. Wellborn Jr., Omega 1954

#### **Alpha-Alpha Chapter, University of North Carolina, Chapel Hill**

Frank S. Best, Alpha-Alpha 1983  
William H. Bryan, Alpha-Alpha 1979  
Dr. John B. Davis, Alpha-Alpha 1976  
Thomas T. Downer, Alpha-Alpha 1962  
William C. Gray Jr., Alpha-Alpha 1973  
Lawrence A. Moyer III, Alpha-Alpha 1980  
CAPT Charlie S. Nelson USN-R, Alpha-Alpha 1942  
Robert H. Parsons, Alpha-Alpha 1945  
William A. Prouty, Alpha-Alpha 1953  
William E. Sanders, Alpha-Alpha 1956  
Richard D. Williams, Alpha-Alpha 1965

#### **Alpha-Tau Chapter, University of Michigan**

W. Philip Ardussi, Alpha-Tau 1957  
Joseph D. Camp, Alpha-Tau 1973  
Roger W. Comstock, Alpha-Tau 1956  
Scott B. Crooks, Alpha-Tau 1965  
Jon H. Diebold, Alpha-Tau 1964  
Milton A. Goetz Jr., Alpha-Tau 1953  
David C. Greeley, Alpha-Tau 1988  
Millard B. Hahn, Alpha-Tau 1933  
Gilbert B. Rodger, Alpha-Tau 1957  
C. J. Keller Smith, Alpha-Tau 1989  
Richard C. Wells, Alpha-Tau 1964

#### **Alpha-Chi Chapter, Ohio Wesleyan University**

W. Teasdale Bennett Jr., Alpha-Chi 1950  
Thomas H. Blakely II, Alpha-Chi 1962  
James G. Caldwell, Alpha-Chi 1955  
Ronald S. Danielson, Alpha-Chi 1966  
Richard A. Goater, Alpha-Chi 1945  
Dr. John L. Goble, Alpha-Chi 1948  
Dr. Russell K. Griffith, Alpha-Chi 1959  
Kirk A. Hornbeck, Alpha-Chi 1968  
Dana A. Jackson, Alpha-Chi 1969  
Dr. Thomas H. Lange, Alpha-Chi 1968  
Lt. Col. Edward E. Lindquist, Alpha-Chi 1962  
Matthew P. Ward, Alpha-Chi 2000  
Donald E. Williams, Alpha-Chi 1938



### Alpha Delta Chapter, Pennsylvania State University

David G. Baack, Alpha Delta 1995  
 Hon. Robert C. Broomfield, Alpha Delta 1955  
 Victor G. Ciaraldi, Alpha Delta 1974  
 Jesse D. Coolbaugh, Alpha Delta 1957  
 Lt. Col. Charles A. Gibbs USAF, Alpha Delta 1954  
 Richard M. Headlee, Alpha Delta 1954  
 Duane G. Junker, Alpha Delta 1963  
 Richard T. McKernan, Alpha Delta 1959  
 Thomas P. Sholes, Alpha Delta 1986  
 James B. Thompson, Alpha Delta 1958

### Beta Delta Chapter, University of Washington

Prof. Philip C. Magnusson, Beta Delta 1937  
 Kenneth G. Wise, Beta Delta 1952

### Gamma Delta Chapter, University of Minnesota

Orion L. Carlson, Gamma Delta 1956  
 Clark H. Johnson, Gamma Delta 1960  
 John W. Laurens, Gamma Delta 1950  
 Dr. Melvin W. Walters, Gamma Delta 1959

### Epsilon Delta Chapter, Oregon State University

Rick D. Anderson, Epsilon Delta 1984  
 Theron C. Bone, Epsilon Delta 1967  
 Marvin R. Elbon, Epsilon Delta 1956  
 James A. Feig, Epsilon Delta 1989  
 Jerry A. Francis, Epsilon Delta 1969  
 Elden M. King, Epsilon Delta 1951  
 Gary G. McGahuey, Epsilon Delta 1964  
 Duncan K. Robertson, Epsilon Delta 1965

### Zeta Delta Chapter, University of Connecticut

Lt. Col. W. Reid Crawshaw, Zeta Delta 1961  
 Richard W. Grosskopf, Zeta Delta 1988  
 William R. Hunniford Jr., Zeta Delta 1988  
 Kenneth P. Keefe, Zeta Delta 1991  
 Timothy M. Nourse, Zeta Delta 1961  
 Robert J. Pellico, Zeta Delta 1957  
 Ronald K. Ritter, Zeta Delta 1967

### Eta Delta Chapter, University of Southern California

George J. Anderson Jr., Eta Delta 1941  
 Thomas S. Hutchinson, Eta Delta 1980  
 James W. Kerry, Eta Delta 1968  
 Daniel C. Pope, Eta Delta 1946  
 Michael Soares, Eta Delta 1987  
 Harlan L. Vague, Eta Delta 1950

### Theta Delta Chapter, University of Florida

William A. Berky, Theta Delta 1969  
 David F. Davis, Theta Delta 1973  
 Dr. Kenneth H. Heller, Theta Delta 1969  
 Richard A. Lloyd, Theta Delta 1951  
 Richard P. Melohn, Theta Delta 1952  
 Rev. Johnson H. Pace Jr., Theta Delta 1940  
 Rev. Robert R. Parks, Theta Delta 1940  
 William H. Seepe, Theta Delta 1953  
 Don L. Six, Theta Delta 1941  
 Dr. Jack M. Spurlock, Theta Delta 1952  
 Richard C. Supinski, Theta Delta 1969  
 J. Lofton Westmoreland, Theta Delta 1968

### Iota Delta Chapter, Indiana University

Bruce R. Browning, Iota Delta 1968  
 Gregrey J. Chalkley, Iota Delta 1976  
 David B. Estes, Iota Delta 1969  
 Peter J. Gruber, Iota Delta 1980  
 William D. Nuss, Iota Delta 1968  
 Mark M. Wahlman, Iota Delta 1970

### Rho Iota Kappa Chapter, University of Rhode Island

Douglas C. Bennet, Rho Iota Kappa 1977  
 Theodore M. Groesbeck, Rho Iota Kappa 1991  
 Mark S. Russo, Rho Iota Kappa 1988  
 Brian P. Shea, Rho Iota Kappa 1989

### Alpha Theta Chi Chapter, University of Nebraska

David G. Forsberg, Alpha Theta Chi 1986  
 John F. Hamann, Alpha Theta Chi 1976  
 Lt. Col. Daniel A. Nollette, Alpha Theta Chi 1984  
 Robert C. O'Connor, Alpha Theta Chi 1979  
 Mark J. Zmarzly, Alpha Theta Chi 1998

### Kappa Delta Chapter, University of Rochester

Harris S. Leven, Kappa Delta 1969

### Lambda Delta Chapter, University of Arizona

Michael E. Ford, Lambda Delta 1968  
 Richard N. Scheid, Lambda Delta 1967

### Mu Delta Chapter, Auburn University

John M. Benham, Mu Delta 2001  
 Dan J. Sinnreich, Mu Delta 1994

### Nu Delta Chapter, Florida State University

Thomas R. Fulcher, Nu Delta 1972  
 Rand Hill, Nu Delta 1993  
 Ryan M. Mullins, Nu Delta 1998  
 John M. Rakowski, Nu Delta 1968

### Xi Delta Chapter, Florida Institute of Technology

Edward E. Lamb, Xi Delta 1990  
 Scott A. Peters, Xi Delta 1998

### Pi Delta Chapter, West Virginia University

Bruce A. Miles, Pi Delta 1974

### Rho Delta Chapter, Oglethorpe University

John J. Fittipaldi, Rho Delta 1971  
 Wayne M. Kise, Rho Delta 1969

### Sigma Delta Chapter, University of California, Davis

Todd N. Michals, Sigma Delta 1993

### Phi Delta Chapter, University of Tennessee

Christopher M. Christi, Phi Delta 1996

### Chi Delta Chapter, Georgia State University

Paul L. Carrier, Chi Delta 1973

### Psi Delta Chapter, University of North Carolina, Charlotte

Mario M. Albano, Psi Delta 1977



**Omega Delta Chapter, Morehead State University**

James S. Womack, Omega Delta 1971

**Alpha Zeta Chapter, State University of West Georgia**

John D. Kehoe III, Alpha Zeta 1986

**Beta Zeta Chapter, University of Central Florida**

Col. Earl W. Powers USMC, Beta Zeta 1974

**Gamma Zeta Chapter, University of North Carolina, Wilmington**

S. Cory Gore Jr., Gamma Zeta 1980

**Delta Zeta Chapter, University of South Florida**

David V. Lepianka, Delta Zeta 1998  
Alex J. Ross, Delta Zeta 1997

**Phi Lambda Theta Chapter, Bucknell University**

Robert J. C. Burnash, Phi Lambda Theta 1953

**Iota Zeta Chapter, George Mason University**

Joseph M. Dreyfuss, Iota Zeta 1990

**Mu Zeta Chapter, University of Denver**

Richard D. Kuerston, Mu Zeta 2002  
Bradley D. Swanson, Mu Zeta 1994

**Nu Zeta Chapter, James Madison University**

Scott K. Maynard, Nu Zeta 1990

**Sigma Zeta Chapter, State University of New York, Albany**

David M. Chittum, Sigma Zeta 1991

**1.00-49.99**

**Gamma Chapter, Emory University**

A. Glenn Bailey MD, Gamma 1957  
Dr. Jackson G. Crowder, Gamma 1957  
John L. Westmoreland Jr., Gamma 1944

**Delta Chapter, Rutgers University**

Horace J. Greeley Jr., Delta 1953  
Thomas Hollinger Jr., Delta 1960

**Epsilon Chapter, Hampden-Sydney College**

Rev. James H. Grant Jr., Epsilon 1960  
Sumner R. Pugh Jr., Epsilon 1957  
Ricks S. Voight Jr., Epsilon 1966

**Eta Chapter, University of Georgia**

Julian S. Daley, Eta 1950  
Richard M. Geriner, Sr., Eta 1961

**Theta Chapter, Rensselaer Polytechnic Institute**

Harry A. Cotesworth Jr., Theta 1951  
Andrew R. Ewing, Theta 1954  
Richard H. Ingraham, Theta 1985

**Iota Chapter, Ohio State University**

Steven J. Allread, Iota 1997  
Stephen E. Grimm Jr., Iota 1947  
Philip H. Hart, Iota 1967  
Edward F. Jefferis, Iota 1966

**Kappa Chapter, University of Wisconsin**

Eugene K. Bjerning, Kappa 1959

**Lambda Chapter, University of California, Berkeley**

Col. William D. Gardiner USA, Lambda 1939  
Alan R. Hiester, Lambda 1943  
Steven E. Ipson, Lambda 1964

**Mu Chapter, Stevens Institute of Technology**

Lee G. Kvidahl, Mu 1971

**Xi Chapter, Cornell University**

Charles G. Bigelow III, Xi 1966

**Omicron Chapter, Yale University**

William A. Kern, Omicron 1955

**Pi Chapter, Northwestern University**

Philip A. Bettendorf, Pi 1973  
Edgar G. Merson, Pi 1958

**Rho Chapter, Lafayette College**

Spencer R. Ankeney, Rho 1964  
David F. Drinkhouse, Rho 1952  
Bruce T. Hyland, Rho 1964  
Robert G. Rufe, Rho 1967  
Craig M. Shields, Rho 1963  
J. Wayne Wrightstone, Rho 1961

**Sigma Chapter, University of Illinois**

Michael J. Kerschner, Sigma 1988

**Tau Chapter, University of Alabama**

Alan B. Clark, Tau 1968

**Phi Chapter, Amherst College**

Donald L. Baker, Phi 1952  
Hervey C. Merrill, Phi 1941

**Chi Chapter, Dartmouth College**

N. James Sullivan, Chi 1946

**Psi Chapter, Lehigh University**

Carlton S. Clark, Psi 1956  
Capt. Keith V. Fike USAF, Psi 1985

**Alpha-Alpha Chapter, University of North Carolina, Chapel Hill**

Ronald E. Johnson, Alpha-Alpha 1970  
Maj. Stuart C. Morton, Alpha-Alpha 1945  
James H. Purks III, Alpha-Alpha 1959

**Alpha-Tau Chapter, University of Michigan**

John Allwood III, Alpha-Tau 1951  
LCDR. Bruce W. Avis, Alpha-Tau 1957  
William H. Pendell Jr., Alpha-Tau 1932  
Thomas A. Stenglein, Alpha-Tau 1951

**Alpha-Chi Chapter, Ohio Wesleyan University**

Hugh R. Conklin Jr., Alpha-Chi 1967  
James L. Moist, Alpha-Chi 1938

**Alpha Delta Chapter, Pennsylvania State University**

Willis E. Kuhns, Alpha Delta 1957  
Bruce E. Moyer, Alpha Delta 1958



Honor Roll Of Givers



**Epsilon Delta Chapter, Oregon State University**

Robert L. Gantenbein Jr., Epsilon Delta 1960  
Allen S. Hall, Epsilon Delta 1961  
Alex M. Hamilton Jr., Epsilon Delta 1956

**Zeta Delta Chapter, University of Connecticut**

Richard J. Darling, Zeta Delta 1956  
Christopher Markelon, Zeta Delta 1989  
Mark Tipperman, Zeta Delta 1970

**Theta Delta Chapter, University of Florida**

Reuben B. Crane Jr., Theta Delta 1941  
Forest S. Hodges Jr., Theta Delta 1950  
F. P. Lawrence II, Theta Delta 1966  
David F. Pero, Theta Delta 1978  
Richard G. Simmons, Theta Delta 1951  
Glenn L. Strickland, Theta Delta 1950

**Iota Delta Chapter, Indiana University**

James R. Trimpe, Iota Delta 1980

**Alpha Theta Chi Chapter, University of Nebraska**

James M. Sanduski, Alpha Theta Chi 1981

**Delta Xi Chapter, West Virginia Wesleyan College**

Todd C. Leonhardt, Delta Xi 1986

**Mu Delta Chapter, Auburn University**

James W. Calhoun III, Mu Delta 1970

**Nu Delta Chapter, Florida State University**

Enrique D. Hernandez, Nu Delta 1991

**Psi Delta Chapter, University of North Carolina, Charlotte**

Michael S. Hewat, Psi Delta 1977

**Alpha Zeta Chapter, State University of West Georgia**

Ashley P. Henson, Alpha Zeta 2002

**Beta Zeta Chapter, University of Central Florida**

Dr. Paul C. Logas, Beta Zeta 1979

**Delta Pi Chapter, Georgia Southwestern State University**

Andy J. Williams Jr., Delta Pi 2002



# CHI | PHI | TIE

**Back by popular demand-**

[THE CHI PHI CUSTOM TIE.]

The finest in silk neckwear for the discriminating  
Chi Phi gentleman.

Your choice of red, blue, or gold with a pattern of subtle  
stripes and the Chi Phi crest.

Make a fashion statement while wearing a  
sign of brotherhood!

Affordably priced @ \$25.00 per tie  
(Georgia residents add \$1.50 tax.)

Can't decide on a color? Buy in triplicate for \$70.00.  
(Georgia residents add \$4.20 tax.)

**Purchases can be made by sending a check to the  
Chi Phi National Office**

**or calling 404.231.1824 with your credit card.**

**Spouses and friends, please note that ties are great gift buys for  
those special occasions!**



**Educational Trust Listing**  
**January 1, 2004-March 31, 2005**

**2500.00-4999.99**

**Alpha Chapter, University of Virginia**  
 James P. Soderquist D.D.S., Alpha 1967

**1000.00-2499.99**

**Lambda Chapter,  
 University of California, Berkeley**  
 Keith D. Jewell, Lambda 1956  
 James R. Moore, Lambda 1933

**Nu Chapter, University of Texas**  
 James B. Graves, Nu 1948

**Alpha-Tau Chapter, University of Michigan**  
 Carl J. Gladfelter, Alpha-Tau 1933

**Alpha-Chi Chapter, Ohio Wesleyan University**  
 Raymond E. Scroggins, Alpha-Chi 1948

**Alpha Delta Chapter,  
 Pennsylvania State University**  
 Andrew W. Schultz Sr., Alpha Delta 1960

**Theta Delta Chapter, University of Florida**  
 Randolph M. Loos, Theta Delta 1977  
 Alfred C. Warrington IV, Theta Delta 1958

**Sigma Delta Chapter, University of  
 California, Davis**  
 Lawrence E. Green, Sigma Delta 1972

**500.00-999.99**

**Alpha Chapter, University of Virginia**  
 Gil Hudnall, Alpha 1968  
 George R. Langford, Alpha 1950  
 David W. Marshall, Alpha 1990

**Beta Chapter, Massachusetts Institute of  
 Technology**  
 John R. Coffman, Beta 1966

**Gamma Chapter, Emory University**  
 Baxter P. Jones, Gamma 1979  
 William A. Parker Jr., Gamma 1950

**Theta Chapter,  
 Rensselaer Polytechnic Institute**  
 John G. Watson III, Theta 1971

**Lambda Chapter,  
 University of California, Berkeley**  
 David A. Kellogg, Lambda 1984  
 James D. Nichols, Lambda 1976  
 Jeffrey P. Palmer, Lambda 1967

**Nu Chapter, University of Texas**  
 Edward L. Morris III, Nu 1989

**Alpha-Tau Chapter, University of Michigan**  
 M. Douglas Dunn, Alpha-Tau 1967

**Theta Delta Chapter, University of Florida**  
 Dr. Jose B. Quintana, Theta Delta 1968

**Sigma Delta Chapter, University of  
 California, Davis**  
 Kristian D. Whitten, Sigma Delta 1970

**250.00-499.99**

**Beta Chapter, Massachusetts Institute of  
 Technology**  
 Denman K. McNear, Beta 1948

**Gamma Chapter, Emory University**  
 Donald L. Mize, Gamma 1969  
 Dr. Howard V. Weems Jr., Gamma 1944

**Mu Chapter, Stevens Institute of Technology**  
 John K. Murtagh, Mu 1975

**Xi Chapter, Cornell University**  
 Frederick I. Sharp III, Xi 1958

**Rho Chapter, Lafayette College**  
 John H. Dillon II, Rho 1963  
 W. Bruce Drinkhouse Jr., Rho 1950  
 James J. Flannery, Rho 1969

**Omega Chapter,  
 Georgia Institute of Technology**  
 David A. Crawford, Omega 1960

**Alpha-Tau Chapter, University of Michigan**  
 Gilbert B. Rodger, Alpha-Tau 1957

**Alpha-Chi Chapter, Ohio Wesleyan University**  
 Thomas M. Muchmore, Alpha-Chi 1948

**Eta Delta Chapter,  
 University of Southern California**  
 Barry L. Blodgett, Eta Delta 1969

**Delta Xi Chapter,  
 West Virginia Wesleyan College**  
 James R. Okonak, Delta Xi 1971

**Rho Delta Chapter, Oglethorpe University**  
 Richard S. Tabas, Rho Delta 1978

**100.00-249.99**

**Alpha Chapter, University of Virginia**  
 Michael S. Beall, Alpha 1976  
 S. Frank Blocker Jr., Alpha 1950  
 Guilford D. Ware, Alpha 1950

**Beta Chapter, Massachusetts Institute of  
 Technology**  
 Douglas A. Cassell, Beta 1962  
 Steve L. Johnson MD, Beta 1955

**Gamma Chapter, Emory University**  
 Jay M. Bass, Gamma 1976  
 John M. Cogburn Jr., Gamma 1963  
 Dr. Frank T. Daly Jr., Gamma 1958  
 Edward C. Dell, Gamma 1970  
 Dana D. Westfall, Gamma 1999

**Delta Chapter, Rutgers University**  
 Ranney G. Adams Jr., Delta 1939

**Epsilon Chapter, Hampden-Sydney College**  
 John B. Long, Epsilon 1938



#### **Eta Chapter, University of Georgia**

Dr. Chenault W. Hailey, Eta 1953  
 Donald G. Howell, Eta 1957  
 Donald P. Lanier, Eta 1961  
 James H. Paschall, Eta 1945  
 Hon. Carl E. Sanders, Eta 1945  
 Kevin W. Smith, Eta 1982

#### **Theta Chapter, Rensselaer Polytechnic Institute**

Robert L. Dickey, Theta 1965  
 William P. McCaughey Jr., Theta 1982  
 Irving A. Wilson, Theta 1950

#### **Iota Chapter, Ohio State University**

Daniel G. Amstutz, Iota 1954  
 Thomas W. Guinther, Iota 1972  
 William H. Ingram, Iota 1961  
 Walter A. Wurster, Iota 1936

#### **Kappa Chapter, University of Wisconsin**

Stanley L. Loose, Kappa 1950  
 Bruno J. Mauer, Kappa 1955  
 Donald L. Stehr, Kappa 1947  
 William W. Wuerger, Kappa 1956

#### **Lambda Chapter, University of California, Berkeley**

Donald C. McNear, Lambda 1953

#### **Mu Chapter, Stevens Institute of Technology**

Jack L. Christie, Mu 1946

#### **Nu Chapter, University of Texas**

Robert L. Hilsher, Nu 1964

#### **Xi Chapter, Cornell University**

Alvin R. Beatty, Xi 1954  
 Richard T. Hough, Xi 1946  
 Omicron Chapter, Yale University  
 Raymond J. Wean Jr., Omicron 1943

#### **Pi Chapter, Northwestern University**

Dr. Robert P. Christopher, Pi 1954  
 Patrick M. O'Day, Pi 1975

#### **Rho Chapter, Lafayette College**

Bruce Applestein MD, Rho 1962  
 Richard S. Gilbert, Rho 1962  
 John J. Morris, Rho 1949

#### **Sigma Chapter, University of Illinois**

Donald J. Babicz, Sigma 1955

#### **Tau Chapter, University of Alabama**

J. Wray Pearce, Tau 1966  
 Peter W. Spencer, Tau 1955

#### **Phi Chapter, Amherst College**

George E. Keith Jr., Phi 1958

#### **Omega Chapter, Georgia Institute of Technology**

James C. Davis, Omega 1975  
 George B. Dunbar, Omega 1951

#### **Alpha-Alpha Chapter, University of North Carolina, Chapel Hill**

Donald N. Ralston, Alpha-Alpha 1944

#### **Alpha-Tau Chapter, University of Michigan**

John S. Flintosh, Alpha-Tau 1959  
 Thomas R. Kemp, Alpha-Tau 1988  
 Delbert L. Law, Alpha-Tau 1964  
 Dr. William F. Rollins, Alpha-Tau 1982

#### **Alpha-Chi Chapter, Ohio Wesleyan University**

David A. Alsbaugh, Alpha-Chi 1992  
 Robert H. Seeley, Alpha-Chi 1945  
 Thomas R. Wilson, Alpha-Chi 1970

#### **Alpha Delta Chapter, Pennsylvania State University**

John W. Bornholdt, Alpha Delta 1949  
 Alex W. Smith Jr., Alpha Delta 1949

#### **Gamma Delta Chapter, University of Minnesota**

Harold J. Borak, Gamma Delta 1959  
 W. Sheridan Kramer, Gamma Delta 1962  
 James A. Telinda, Gamma Delta 1969

#### **Delta Delta Chapter, University of California, Los Angeles**

D. Ross Dodson, Delta Delta 1953

#### **Epsilon Delta Chapter, Oregon State University**

Byron C. Baxter, Epsilon Delta 1953

#### **Eta Delta Chapter, University of Southern California**

Kennith H. Burns, Eta Delta 1950  
 Col. David B. Clardy, Eta Delta 1952  
 E. Ray Scott Jr., Eta Delta 1947

#### **Theta Delta Chapter, University of Florida**

Daryl M. Carter, Theta Delta 1985  
 David F. Davis, Theta Delta 1973  
 Charles R. Schumacher, Theta Delta 1953

#### **Iota Delta Chapter, Indiana University**

Daniel A. Bowden, Iota Delta 1976  
 David W. Hillery, Iota Delta 1976  
 Thomas L. Shriner Jr., Iota Delta 1969

#### **Rho Iota Kappa Chapter, University of Rhode Island**

Theodore M. Groesbeck, Rho Iota Kappa 1991  
 Thomas J. Quinn, Rho Iota Kappa 1976

#### **Alpha Theta Chi Chapter, University of Nebraska**

David G. Forsberg, Alpha Theta Chi 1986  
 Mark S. Mullet, Alpha Theta Chi 1982

#### **Nu Delta Chapter, Florida State University**

William Gundlach III, Nu Delta 1973  
 Capt. Jesse R. Wentworth II, Nu Delta 2002

#### **Omicron Delta Chapter, Miami University of Ohio**

Arthur E. Rogers, Omicron Delta 1986

#### **Sigma Delta Chapter, University of California, Davis**

Jeremiah J. Simpson, Sigma Delta 2000

#### **Phi Delta Chapter, University of Tennessee**

James D. Beckham Jr., Phi Delta 1969



**Phi Lambda Theta Chapter,  
Bucknell University**

Mark A. Fuller, Phi Lambda Theta 1987

**50.00-99.99**

**Alpha Chapter, University of Virginia**

William L. Stobbert, Alpha 1974

**Beta Chapter,  
Massachusetts Institute of Technology**

Paul M. W. Bruckmann, Beta 1942

Thomas W. Carmody, Beta 1944

Donald M. Fryer, Beta 1977

Harry M. Johnson, Beta 1957

Dennis Rivera, Beta 1999

**Gamma Chapter, Emory University**

Dr. James G. Kenimer, Gamma 1966

Hon. Alonzo L. McDonald Jr., Gamma 1949

William J. Peterson Jr., Gamma 1940

Paul W. Underwood, Gamma 1971

**Zeta Chapter, Franklin & Marshall College**

Samuel M. Altdoerffer, Zeta 1950

**Eta Chapter, University of Georgia**

Dr. Peter M. Payne, Eta 1960

Frampton E. Simons, Eta 1981

Neal L. Williams, Eta 1958

**Theta Chapter,  
Rensselaer Polytechnic Institute**

Weston B. Albiston, Theta 1950

Frank Fraprie, Theta 1953

Stanton E. Parrish, Theta 1944

**Iota Chapter, Ohio State University**

Keith L. Babcock, Iota 1949

Scott A. Cammarn, Iota 1983

Gerald W. Gill, Iota 1954

**Kappa Chapter, University of Wisconsin**

Laszio P. Kaveggia, Kappa 1978

Robert W. Lutz, Kappa 1949

James A. McMillin, Kappa 1963

**Mu Chapter, Stevens Institute of Technology**

Sidney G. Kelley Jr., Mu 1950

**Nu Chapter, University of Texas**

Homer I. Lewis, Nu 1942

**Xi Chapter, Cornell University**

Robert K. Blain, Xi 1969

**Omicron Chapter, Yale University**

Robert L. Edens Jr., Omicron 1945

**Rho Chapter, Lafayette College**

Harrison McAlpine Jr., Rho 1951

**Sigma Chapter, University of Illinois**

Paul Armstrong II, Sigma 1954

George W. McFedries, Sigma 1939

Walter H. Rietz Jr., Sigma 1948

**Psi Chapter, Lehigh University**

Joseph B. Shearer, Psi 1948

**Omega Chapter, Georgia Institute of  
Technology**

Casey B. Daniell, Omega 2000

Joseph A. Kasprzak Jr., Omega 1974

Jere B. Stokely, Omega 1975

**Alpha-Alpha Chapter, University of North  
Carolina, Chapel Hill**

James J. Edmundson Jr., Alpha-Alpha 1992

William E. Sanders, Alpha-Alpha 1956

**Alpha-Tau Chapter, University of Michigan**

Joseph D. Camp, Alpha-Tau 1973

Benjamin F. Sproat, Alpha-Tau 1948

**Alpha-Chi Chapter, Ohio Wesleyan University**

W. Teasdale Bennett Jr., Alpha-Chi 1950

Thomas H. Blakely II, Alpha-Chi 1962

Dana A. Jackson, Alpha-Chi 1969

**Alpha Delta Chapter,  
Pennsylvania State University**

Daniel T. Vogel, Alpha Delta 1984

**Gamma Delta Chapter, University of  
Minnesota**

Clark H. Johnson, Gamma Delta 1960

**Epsilon Delta Chapter,  
Oregon State University**

Lewis N. Williams, Epsilon Delta 1954

**Zeta Delta Chapter,  
University of Connecticut**

Lt. Col. W. Reid Crawshaw, Zeta Delta 1961

Timothy M. Nourse, Zeta Delta 1961

Robert J. Wozniak, Zeta Delta 1994

**Eta Delta Chapter,  
University of Southern California**

Steven J. Kessler, Eta Delta 1991

**Theta Delta Chapter, University of Florida**

Randell L. Platt, Theta Delta 1980

**Iota Delta Chapter, Indiana University**

William F. Brockmann, Iota Delta 1966

**Rho Iota Kappa Chapter,  
University of Rhode Island**

Douglas C. Bennet, Rho Iota Kappa 1977

Paul A. Chassey, Rho Iota Kappa 1967

**Alpha Theta Chi Chapter,  
University of Nebraska**

John F. Hamann, Alpha Theta Chi 1976

Lt. Col. Daniel A. Nollette, Alpha Theta Chi 1984

**Kappa Delta Chapter,  
University of Rochester**

Michael J. Brunda, Kappa Delta 1971

Harris S. Leven, Kappa Delta 1969

**Nu Delta Chapter, Florida State University**

Thomas R. Fulcher, Nu Delta 1972

John M. Rakowski, Nu Delta 1968

**Xi Delta Chapter,  
Florida Institute of Technology**

Edward E. Lamb, Xi Delta 1990

Scott A. Peters, Xi Delta 1998



**Sigma Delta Chapter,  
University of California, Davis**  
Jeffrey P. Nash, Sigma Delta 1982

**Phi Delta Chapter, University of Tennessee**  
J. Randy Williams, Phi Delta 1989

**Psi Delta Chapter, University of North  
Carolina, Charlotte**  
Palmer M. May, Psi Delta 1981

**Omega Delta Chapter,  
Morehead State University**  
James S. Womack, Omega Delta 1971

**Alpha Zeta Chapter,  
State University of West Georgia**  
Edwin E. Harman III, Alpha Zeta 1994

**Phi Lambda Theta Chapter,  
Bucknell University**  
Robert J. C. Burnash, Phi Lambda Theta 1953

**1.00-49.99**  
**Alpha Chapter, University of Virginia**  
Richard Baylor, Alpha 1951

**Gamma Chapter, Emory University**  
Dr. David A. Baron, Gamma 1975  
Dr. Jackson G. Crowder, Gamma 1957  
Dr. A. Valdemar Gude, Gamma 1943  
Ashley B. Haight Jr., Gamma 1955

**Epsilon Chapter, Hampden-Sydney College**  
Sumner R. Pugh Jr., Epsilon 1957  
John E. Roberts Jr., Epsilon 1961

**Eta Chapter, University of Georgia**  
Julian S. Daley, Eta 1950  
Richard M. Geriner, Sr., Eta 1961

**Iota Chapter, Ohio State University**  
Dr. Manuel Tzagournis, Iota 1956

**Kappa Chapter, University of Wisconsin**  
Eugene K. Bjerning, Kappa 1959  
Jeff G. Langenbach, Kappa 1990

**Lambda Chapter,  
University of California, Berkeley**  
Frank N. Bender, Lambda 1943  
Alan R. Hiester, Lambda 1943

**Xi Chapter, Cornell University**  
Kenneth G. Asch, Xi 1969

**Omicron Chapter, Yale University**  
William A. Kern, Omicron 1955

**Pi Chapter, Northwestern University**  
Philip A. Bettendorf, Pi 1973

**Sigma Chapter, University of Illinois**  
Hon. Ludwig J. Kuhar, Sigma 1964

**Psi Chapter, Lehigh University**  
Timothy S. Onderko, Psi 2002  
Richard J. Rex, Psi 1964

**Omega Chapter,  
Georgia Institute of Technology**  
Ray E. Gay, Omega 1968  
Charles C. Gibson, Omega 2001  
Hugh E. Wright, Omega 1941

**Alpha-Alpha Chapter, University of North  
Carolina, Chapel Hill**  
Robert H. Parsons, Alpha-Alpha 1945

**Alpha-Tau Chapter, University of Michigan**  
Millard B. Hahn, Alpha-Tau 1933  
Dr. Arnold F. Sarya, Alpha-Tau 1956

**Alpha-Chi Chapter, Ohio Wesleyan University**  
Garrett D. Moore, Alpha-Chi 2002

**Gamma Delta Chapter,  
University of Minnesota**  
Jerome K. Corrigan, Gamma Delta 1948  
Gary L. Schwantz, Gamma Delta 1973

**Delta Delta Chapter, University of California,  
Los Angeles**  
Lucius M. Spencer, Delta Delta 1939

**Epsilon Delta Chapter,  
Oregon State University**  
Robert L. Gantenbein Jr., Epsilon Delta 1960  
Raymond L. Wilder, Epsilon Delta 1952

**Eta Delta Chapter,  
University of Southern California**  
Robert D. Ryan, Eta Delta 1938  
Harlan L. Vague, Eta Delta 1950

**Iota Delta Chapter, Indiana University**  
James R. Trimpe, Iota Delta 1980

**Alpha Theta Chi Chapter,  
University of Nebraska**  
James M. Sanduski, Alpha Theta Chi 1981

**Kappa Delta Chapter,  
University of Rochester**  
Robert M. Hirsh, Kappa Delta 1969

**Lambda Delta Chapter, University of Arizona**  
Peter B. Backlund, Lambda Delta 2005

**Nu Delta Chapter, Florida State University**  
Martin A. Winkler Jr., Nu Delta 1985

**Beta Theta Chapter, Chowan College**  
Jonathan S. B. Bukva, Beta Theta 2002

**UIW Chapter, University of Incarnate Word**  
Glenn B. Johnson, UIW 2004



# 2005 Sparks Memorial Medal Recipients

Created in 1924 in honor of Edwin Erle Sparks-Alpha-Chi 1884, Iota 1884, president emeritus of Pennsylvania State College (now university), and a truly great Chi Phi-the Sparks Memorial Medal is awarded annually to the man having the highest G.P.A. in each Chapter and Colony.

The Sparks Memorial Medal is Chi Phi's highest award for individual academic achievement, reserved exclusively for those Brothers who have excelled in their academic rigors. A truly singular honor, the Sparks Memorial Medal, itself, contains many historic symbols.

A bar that bears the faces of the Hobart Order serves as the top anchor. It contains the word "Paideia," Greek for "learning acquired by education." A scarlet and blue ribbon, colors identical to those of the Hobart Order, suspends the medal from the bar pin. The medal is an embossed replica of the old Princeton pin containing the symbolic swords of the Southern Order and the stars of the Princeton Order. At the top and the bottom of the Phi is the name "Sparks Medal."

The faculties of the various colleges, universities, and institutions of higher learning select the winners based solely on academic performance. Since only one medal can be awarded to each Chapter and Colony, the task of selecting the recipients can sometimes be quite Herculean.



Epsilon	Hampden-Sydney College	Matthew J. Friedman
Eta	University of Georgia	Adria Markus Ortlieb
Kappa	University of Wisconsin	Michael Ryan Rummel
Lamda	University of California, Berkeley	Robert Greg IV
Omega	Georgia Institute of Technology	Nick Flieg
Alpha-Tau	University of Michigan	Brad Reames
Alpha Delta	Penn State University	Christopher Romanoski
Psi Delta	University of N. Carolina, Charlotte	Kavan Baden Paga'n
Gamma Zeta	University of N. Carolina, Wilmington	Michael Parrish
Epsilon Zeta	Humboldt State University	Jake Campbell
Kappa Zeta	Purdue University	Brandon C. Barach
Lambda Zeta	St. Mary's University	Ernie DeLaRosa
Omega Zeta	University of North Florida	James Graulich
Zeta Theta	State University of New York at Oneonta	Vincent Verteramo



# THE CHRONICLES OF CHI PHI

**650 pages of Chi Phi lore  
Chi Phi's triple origin  
The union of the Northern and Southern Order  
Chi Phi in the modern era**



**Hardbound edition \$25  
(Georgia residents add \$1.50 tax.)  
Softbound edition \$15  
(Georgia residents add \$0.90 tax.)**



Purchases can be made  
by sending a check to the Chi Phi Educational Trust  
or calling 404.231.1824 to place your order.



## ZETA THETA CHAPTER

# Journey

## FROM COLONY TO CHAPTER

by Will Malcolm, Alpha

The Zeta Theta Chapter, at the State University College at Oneonta, worked for over a year and a half to see the brotherhood evolve from Colony status to Chapter. It was a long journey, with many twists and turns, but the strong group effort resulted in a chartering banquet on November 13, 2004.

The school has a rough history of Greek fraternities. Before the group became a colony in 2003, all of the fraternities had left campus in the mid-nineties. They moved downtown and became gangs that were nationally known for their hazing allegations and violence. The four founding fathers: Brian Foster, Jay Nasta, Anthony DeAngelis, and Chris Vece sought to bring fraternities back to campus and restore respect to what it means to be Greek.

The brothers worked diligently to make a positive reputation for our brotherhood. The colony received a campus community service award, the E. Bates Block Award for community involvement, and did its best to represent those ideals at the national conferences. Many steps were also taken to solidify relations with the Greek community by offering help and holding positions on the Greek Council.

With the help of the national office, the assistance and hospitality of brothers at the Theta, Upsilon, and Pi Zeta Chapters, and the support of the school administration and other Greek organizations, the colony was able to achieve our founding fathers goals

of an established chapter of a highly regarded fraternity on campus. The chapter was honored to be able to host the Grand Council, as well as members of the national office and chapters from around the region, at our banquet in November. Hopefully the new class of fifteen men, and the hard work and dedication of the active brothers, will help to continue this positive trend and aid the national organization.

We look forward to making more positive gains within our community in the future, as well as furthering our chapter by gaining more true gentlemen.



**Top:** Ron Frank, Nu Delta 1983, Grand Alpha; Brian Foster, Zeta Theta 2004, Colonizing First Alpha; Vinny Verteramo Zeta Theta 2006, Chartering Alpha; Michael Azarian, Psi Delta 1997, National Director.  
**Bottom:** Zeta Theta Chapter at Chartering Banquet.





# EXPANDING A C R O S S THE NATION

Chi Phi expansion efforts are in full swing for our staff and volunteers. A formal presentation occurred at **Texas State University-San Marcos (formerly Southwest Texas State University)** on Monday, March 28, 2005. Chi Phi is one of four North-American Interfraternity Conference organizations that have advanced to a finalist spot at Texas State. The other fraternities that have accepted invitations to conduct an expansion proposal include Phi Kappa Tau, Sigma Phi Epsilon, and Sigma Pi. The men's fraternity community at Texas State has seen rapid growth in the past five years, and the University is planning to colonize two new groups during the 2005-2006 academic year. Invitations have been sent to select chapters in Texas to participate in the expansion presentation.

Further, three different interest groups have developed across the nation that could bring Chi Phi back to several campuses. Brian Tenclinger, Director of Undergraduate Services, and Richard Kuerston, Director of Membership Development, have been working with an interest group at **Shepherd University (WV)**. Brother Kuerston traveled to Shepherdstown, West Virginia, in January and met with a group of men who have received support from the university to form a new student organization, and hopefully, a new men's fraternity. Brother Kuerston has also recently sent a mailing to alumni in the West Virginia area as a call for volunteers to mentor and support the group at Shepherd University in the near future. Please contact Brother Kuerston at [Kuerston@chiphi.org](mailto:Kuerston@chiphi.org) if you are interested in serving in this volunteer mentor capacity.

Two other interest groups exist at **Virginia Polytechnic Institute and State University (Virginia Tech)** and the **University of Florida (UF)**. If successful, both of these interest groups would actually be re-colonization efforts of the Delta Phi Sigma Chapter (Virginia Tech) and Theta Delta Chapter (UF). Delta Phi Sigma alumnus, Chris Jennings, has been instrumental in the formation of an active alumni group in the Blacksburg and Roanoke areas of Virginia, as well as working diligently with the undergraduates and institution to make sure the climate is healthy for a new fraternity at Virginia Tech. Brian Tenclinger and Michael Azarian traveled to Gainesville in late February to meet with Theta Delta alumni and University of Florida administrators who have been coaching a group of young men at the institution who share similar values to those of Chi Phi.

While not solid yet, Chi Phi has been contacted by small groups of students at **Loyola University of Chicago**, and **SUNY-Albany** who have read about Chi Phi Fraternity and wish to learn more about starting a chapter at their respective campuses.

If you are interested in assisting with the expansion efforts of Chi Phi Fraternity, please contact Brian Tenclinger at [Tenclinger@chiphi.org](mailto:Tenclinger@chiphi.org). We are looking for alumni who can mentor undergraduate men about the core purposes of Chi Phi, the methodology of organizing what is, essentially, a small business, and who are willing to dedicate time, energy, and resources to see Chi Phi grow across the nation.





2005 Chi Phi

# Wilderness Academy...

## Test Yourself

ONE OF THE GREAT TRADITIONS OF CHI PHI FRATERNITY IS THE COLLEGE OF EXCELLENCE.

COE has been a vehicle for personal leadership development for many years. Evaluations from the 2003 and 2004 COE events have shown an increasing number of repeat customers; meaning, many of our undergraduates have returned to COE for a second time. The feedback from these second year students has been good; however, the program is not meeting the demands of a growing trend in chapter leadership. Officers are transitioning from one position to another and looking for advanced leadership training in their second year.



To meet the demands of this growing trend, Chi Phi has embarked on a new leadership program designed to take undergraduates out of the classroom and to test their skills, stamina, and focus on the values of the Fraternity. Modeled after a similar program used by Beta Theta Pi Fraternity, we are pleased to launch the 2005 Chi Phi Wilderness Academy.

The Chi Phi Wilderness Academy (WA) is an outdoor leadership experience that takes undergraduates through a bold agenda that focuses on the core values of the Fraternity and on a series of challenging outdoor elements designed to promote personal leadership and development. The WA is a seven-day, six-night journey in a remote area of Colorado or California. Participants on the California trips will learn backpacking, hiking, and mountain and/or coastline navigation. These trips are physically demanding, and participants must be in good physical condition. Participants on the



Colorado trip will experience more group and individual process, ritual, and rites of passage, as well as a two-night solo. Participants on this trip do not need to be in peak physical condition. All trips will focus on personal growth and development through using the Chi Phi Ritual, practicing leadership, developing communication skills, learning trust, and spending a night alone in the wilderness, as well as a sweat lodge ceremony.

Director of Undergraduate Services, Brian Tenclinger, has been working with his counterpart at the Beta Theta Pi headquarters to design four sessions of the Wilderness Academy. Each session will have similar outdoor elements, but the focus on the Ritual and leadership skills will remain the same. Beta's Wilderness Challenge has quickly advanced to the highest rated program sponsored by their national office and educational foundation. It is our intention to offer the WA and the COE in alternating years (WA in 2005, COE in 2006, WA in

All trips will focus on personal growth and development through using the Chi Phi Ritual, practicing leadership, developing communication skills, learning trust, and spending a night alone in the wilderness, as well as a sweat lodge ceremony.



2007, and so forth). By doing so, we have the opportunity to target a larger group of undergraduate leaders with these two unique programs.

Unlike COE, where we can host an unlimited number of undergraduates, the WA is a program with selection criteria. Undergraduates will be selected to participate in the WA based on scholarship, chapter and/or college leadership, and letters of recommendation. This is a new historical program for Chi Phi and it does not come without cost. The total cost to off-set an undergraduate's expense for the Wilderness Academy is a \$500 contribution to the Educational Trust. Your \$500 tax-deductible gift will fund one undergraduate's tuition and travel reimbursement.

Historically, the Chi Phi Loyalty Campaign has directly benefited the COE. Now in the off years, the Loyalty Campaign will remain in effect to assist in the funding of the Wilderness Academy. Alumni can make a contribution on the Chi Phi website, or by contacting Michael Azarian, National Director, at [Azarian@chiphio.org](mailto:Azarian@chiphio.org).



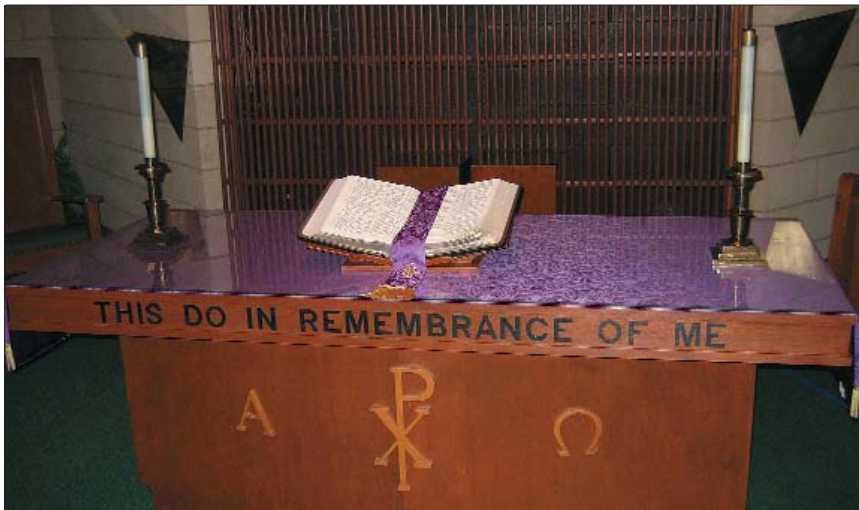
**Making Copies...** it is something many of us do hundreds of times a day and never think about it. The next time you are standing in front of the copy machine, take a moment to think about a Chi Phi Fraternity member's role in this daily process.

George Robson Mott II, Alpha-Chi 1943, was born in Syracuse, N.Y., the son of Reverend Mott, Sr., and Mrs. Martha Mott. He moved to Livonia, N.Y., when he was just six following the death of his father. Mott's long list of achievements began in 1939 when he graduated as Salutatorian. The following year he began college at Ohio Wesleyan University, where he joined the Alpha-Chi chapter and began his major in Physics and Mathematics. While in college, Brother Mott participated in both concert and marching band, which later led to him being the chorus director for the chapter during his junior and senior years. He also served the fraternity as Delta during this same time. He began building and renovating areas of the chapter facility, most notably the darkroom that he created in the basement, which allowed for a more in-depth pictorial history of the chapter during his years. Brother Mott was also the recipient of two Sparks Medals during his years at Ohio Wesleyan University.

Following graduation, Brother Mott worked for the United States Naval Research Laboratory (NRL) in Washington, D.C., testing the suitability of electronic devices in naval equipment. These included components for radios and radar, as well as the durability of components when affected by the shock and vibrations of equipment on naval vessels during wartime. The US Naval Reserves commissioned George Mott as an Ensign during his time working as a civilian, in order to ensure continuity of the work being done. Shortly after his commissioning, George married Ruth Woolston and continued to work for the NRL until the conclusion of World War II.

Following the war, Brother Mott returned to school; this time for a PhD in Physics from the University of Rochester. During his first year at Rochester, the Physics Department received a contract with the U.S.

**Dr. George R. Mott,  
Alpha-Chi 1943, with  
granddaughter Lucy.**



Top: Communion Alter at Fort Myers Congregational United Methodist Church built by Brother Mott.  
Bottom: Dr. Mott, Alpha-Chi 1943, with wife Phyllis.

Navy to design an “atom smasher” Synchro-Cyclotron for its nuclear research program. Brother Mott was chosen as one of the graduate assistants to work on the team, which involved a move to the University of California - Berkeley. At the age of 31, while working on his doctoral degree, Brother Mott was diagnosed with Polio, which caused him to lose the previous levels of use of his right hand, almost to the point of no use at all. Dr. Mott graduated with his PhD in 1952 and was quickly hired by a company known at the time as The Haloid Company.

The Haloid Company was a manufacturer of photographic and photocopy papers and cameras. These machines produced documents with white writing on a black background and were of a very low quality. Battelle Memorial Institute partnered with Haloid to commercialize the patents of Chester Carlson, the owner and CEO of Haloid, for an electro-photographic process for making copies. Dr. Mott was a part of the team of researchers assigned to creating the methods and materials necessary to make the process of photocopying possible.

The first of these machines was the Xerox 914, so called because it could only produce copies that measured 9” x 14”. Brother Mott played a role in over 25 of the patents submitted during the early years of creating these new machines. His name is not on these patents, but he was given stock in the Haloid Company as compensation for his work. This new electro-photographic process is called xerography. As the company grew and advancements were made, the name was changed to Haloid-Xerox, and later to Xerox Corporation. Dr. Mott’s service continued with Xerox for

30 years and included work on improvements in current copy machines and the possibility of color copying. The first color copiers created by Brother Mott and his team were dismissed by the marketing department at Xerox as “probably not marketable”. The company later had to address the fact that their neglect of this invention cost the company in future copier production.

Following his retirement from Xerox, Dr. Mott began work with Mr. Van Auken, and the men created a very small copier that was marketed for in-home use by the Xerox Corporation. Brother Mott fully retired following this invention, but he never stopped working and making improvements to aspects of life around him. His passion for woodworking is visible in the sanctuary of the Fort Myers Congregational United Church of Christ. Brother Mott’s wife passed away in the mid-1990s; he later married his second wife, Phyllis Risch, in June 1998. Dr. Mott and his wife still reside in Florida.

Brother Mott continues his connection to Chi Phi Fraternity through his friendships with fellow Alpha-Chi brothers. He has never allowed his disabilities to limit what he has been able to accomplish in his life, and he has been a role model for generations of fraternity men. His character and devotion are what help him to make life better for those around him. This models what Chi Phi Fraternity strives to develop within our members. “To build better men through lifelong friendships, leadership opportunities, and character development” is the mission of the fraternity, and Chi Phi is proud that Dr. George Mott II continues to live this mission everyday.







# 140<sup>th</sup> Chi Phi Congress

# SAN ANTONIO TEXAS

San Antonio, Texas  
June 23-26, 2005

**trueblue**

**THE CHI PHI FRATERNITY**

850 Indian Trail Road NW

Lilburn, GA 30047-6866

**Change Service Requested**